

DS-3E0318P-E(C) 100 Mbps Long Range PoE Switch

DS-3E0318P-E(C) switches are layer 2 100 Mbps PoE switches, providing advanced PoE power supply technology and Gigabit networks design on the basis of high-performance access to ensure stable data upload. The switches support long range, port isolation, and PoE watchdog function.



Key Feature

- Intelligent PoE management.
- Up to 300 m long range PoE transmission.
- Port isolation to improve network security.
- 6 KV surge protection to improve reliability in harsh environment.
- PoE watchdog to auto-detect and restart cameras that do not respond.

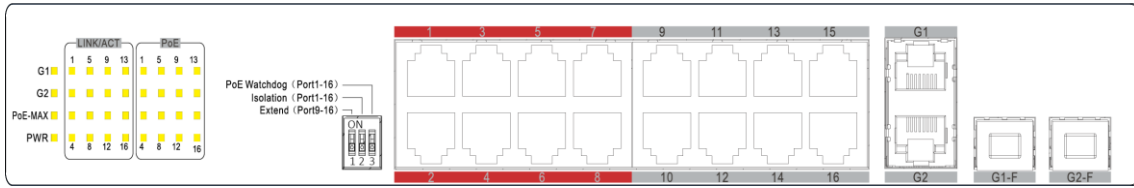


▪ Specification

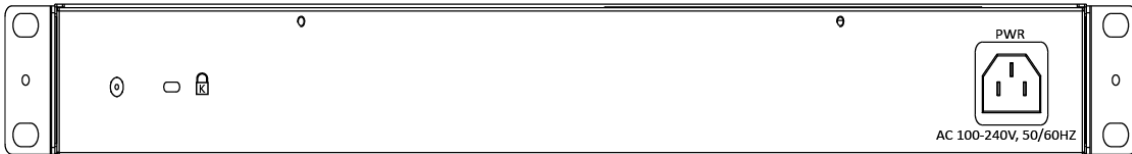
	Model	DS-3E0318P-E(C)
Network Parameters	Port Number	16 × 100 Mbps PoE RJ45 ports, 2 × gigabit combos
	Port Type	RJ45 port, full duplex, MDI/MDI-X adaptive
	Standard	IEEE 802.3, IEEE 802.3u, IEEE 802.3x, IEEE 802.3ab
	Forwarding Mode	Store-and-forward switching
	Working Mode	Standard mode (default), Extend mode, Isolation mode, PoE watchdog mode
	High Priority Ports	Ports 1 to 8
	Ports for Long-Distance Transmission	Ports 9 to 16
	MAC Address Table	16 K
	Switching Capacity	7.2 Gbps
	Packet Forwarding Rate	5.3568 Mpps
	Internal Cache	4 Mbits
PoE Power Supply	PoE Standard	Ports 1 to 8: IEEE 802.3af, IEEE 802.3at
	PoE Power Pin	Ports 1 to 16: Ethernet cables 1/2/3/6 and 4/5/7/8 provide power supply simultaneously.
	PoE Port	Ports 1 to 16
	Max. Port Power	Ports 1 to 16: 30 W
	PoE Power Budget	225 W
Dialing Function	Long Range	Ports 9 to 16: up to 300 m.
	Port Isolation	Ports 1 to 16: port isolation mode to improve network security.
	PoE Watchdog	Ports 1 to 16: auto detect and restart the cameras that do not respond.
General	Shell	Metal material
	Gross Weight	3.185 kg (7.02 lb)
	Net Weight	2.6 kg (5.73 lb)
	Dimension (W × H × D)	440 mm × 220.8 mm × 44 mm (17.32" × 8.69" × 1.73")
	Operating Temperature	-10 to 55°C (14 to 131°F)
	Storage Temperature	-40 to 85°C (-40 to 185°F)
	Operating Humidity	5% to 95% (no condensation)
	Storage Humidity	5% to 95% (no condensation)
	Power Supply	100-240V~, 50/60 Hz, 4 A Max
	Power Consumption in Idle	< 25 W
	Power Source	250 W
Max. Power Consumption	250 W	
Approval	EMC	FCC (47 CFR Part 15, Subpart B); CE-EMC (EN 55032: 2015, EN 61000-3-2: 2014, EN 61000-3-3: 2013, EN 55024: 2010 +A1: 2015); RCM (AS/NZS CISPR 32: 2015); IC (ICES-003: Issue 6, 2016)
	Safety	UL (UL 60950-1); CB (IEC 60950-1:2005 + Am 1:2009 + Am 2:2013); CE-LVD (EN 60950-1:2005 + Am 1:2009 + Am 2:2013)
	Chemistry	CE-RoHS (2011/65/EU); WEEE (2012/19/EU); Reach (Regulation (EC) No 1907/2006)

▪ **Physical Interface**

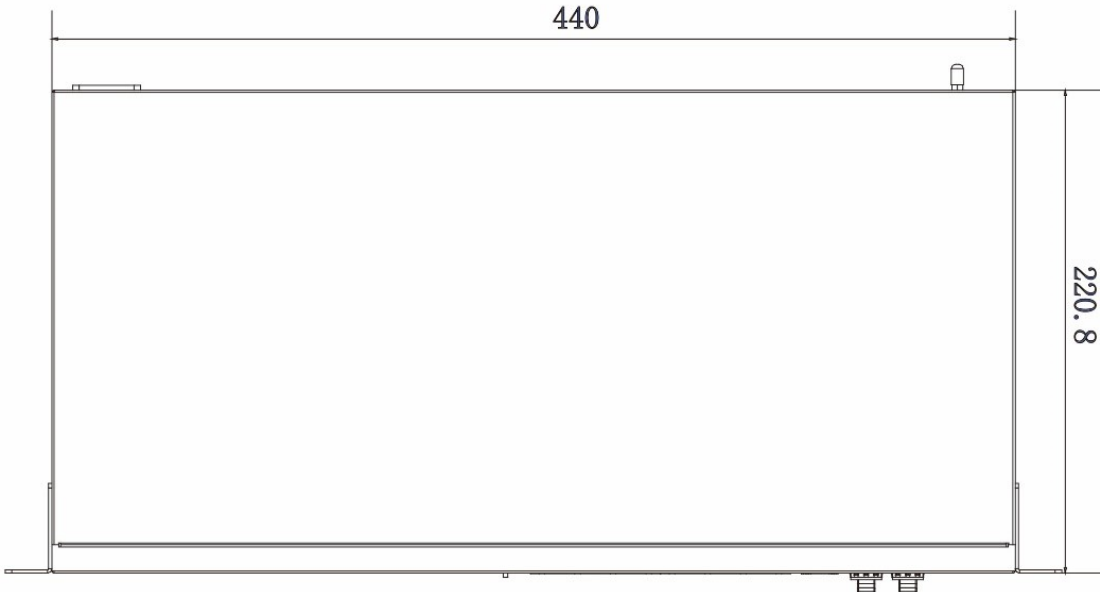
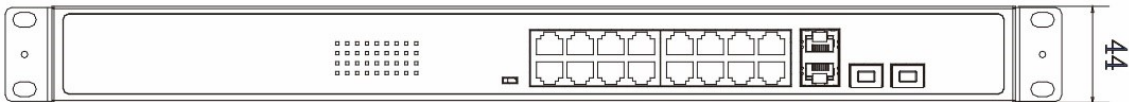
Front Panel:



Rear Panel:



▪ **Dimension (unit: mm)**

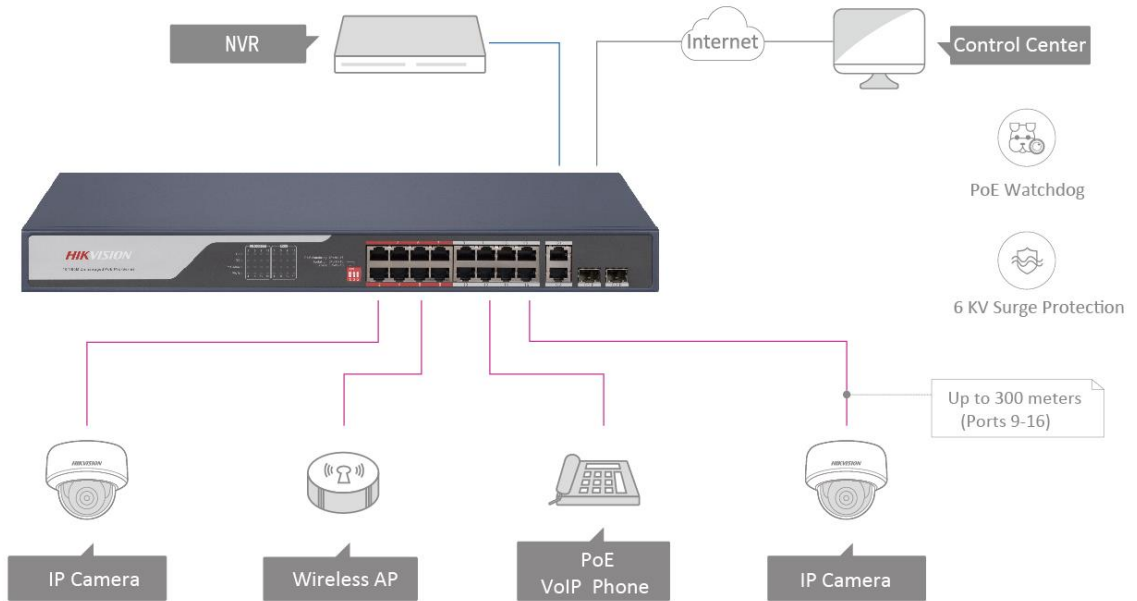


▪ **Available Model**

DS-3E0318P-E(C)

Typical Application

- Data
- Power+Data(PoE)
- Optical Fiber



16-Port 10/100M PoE
10/100M Unmanaged PoE Pro-Series

Distributed by



HIKVISION®

Headquarters

No.555 Qianmo Road, Binjiang District,
 Hangzhou 310051, China
 T +86-571-8807-5998
 overseasbusiness@hikvision.com

HIKVISION USA
 T +1-909-895-0400
 sales.usa@hikvision.com

HIKVISION AUSTRALIA
 T +1-22-8599-4233
 salesau@hikvision.com

HIKVISION INDIA
 T +91-22-28469900
 sales@pramahikvision.com

HIKVISION CANADA
 T +1-866-200-6690
 sales.canada@hikvision.com

HIKVISION THAILAND
 T +662-275-9949
 sales.thailand@hikvision.com

HIKVISION EUROPE
 T +31-23-5542770
 sales.eu@hikvision.com

HIKVISION ITALY
 T +39-0438-6902
 info.it@hikvision.com

HIKVISION BRAZIL
 T +55 11 3318-0050
 Latam.support@hikvision.com

HIKVISION TURKEY
 T +90 (216)521 7070- 7074
 sales.tr@hikvision.com

HIKVISION MALAYSIA
 T +601-7652-2413
 sales.my@hikvision.com

HIKVISION UK & IRELAND
 T +01628-902140
 sales.uk@hikvision.com

HIKVISION SOUTH AFRICA
 Tel: +27 (10) 0351172
 sale.africa@hikvision.com

HIKVISION FRANCE
 T +33(0)1-85-330-450
 info.fr@hikvision.com

HIKVISION KAZAKHSTAN
 T +7-727-9730667
 nikia.panfilov@hikvision.ru

HIKVISION VIETNAM
 T +84-974270888
 sales.vt@hikvision.com

HIKVISION UAE
 T +971-4-4432090
 salesme@hikvision.com

HIKVISION SINGAPORE
 T +65-6684-4718
 sg@hikvision.com

HIKVISION SPAIN
 T +34-91-737-16-55
 info.es@hikvision.com

HIKVISION TASHKENT
 T +99-87-1238-9438
 uzb@hikvision.ru

HIKVISION HONG KONG
 T +852-2151-1761
 info.hk@hikvision.com

HIKVISION RUSSIA
 T +7-495-669-67-99
 saleru@hikvision.com

HIKVISION KOREA
 T +82-(0)31-731-8817
 sales.korea@hikvision.com

HIKVISION POLAND
 T +48-22-460-01-50
 info.pl@hikvision.com

HIKVISION INDONESIA
 T +62-21-2933759
 Sales.Indonesia@hikvision.com

HIKVISION COLOMBIA
 sales.colombia@hikvision.com