

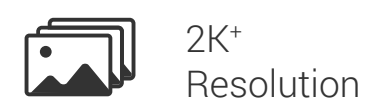


HB8 **2K+**

Battery-Powered Pan & Tilt Wi-Fi Camera

No strings attached, no area unnoticed

Meet EZVIZ's first Battery-Powered Pan & Tilt Security Camera, the HB8. It's truly a one-of-a-kind! Capturing details from all directions, the HB8 2K+ can "see" in 360 degrees with incredibly sharp resolution, and provides free on-device storage to auto-record nearby activity. With its ultra-long, 210-day battery life, the HB8 revolutionizes the complex installation of an outdoor camera while performing as well as its wired equivalent. And with optional solar power, the HB8 gets even better.



2K+ Resolution



360° Panoramic Coverage



Up to 210 Days of Battery Life¹ (10400 mAh)



Free 32 GB eMMC Storage



Smart Human Motion Detection



Auto-Tracking



Color Night Vision



Active Defense



Weatherproof Design



Two-Way Talk



Customizable Voice Alerts

H.265

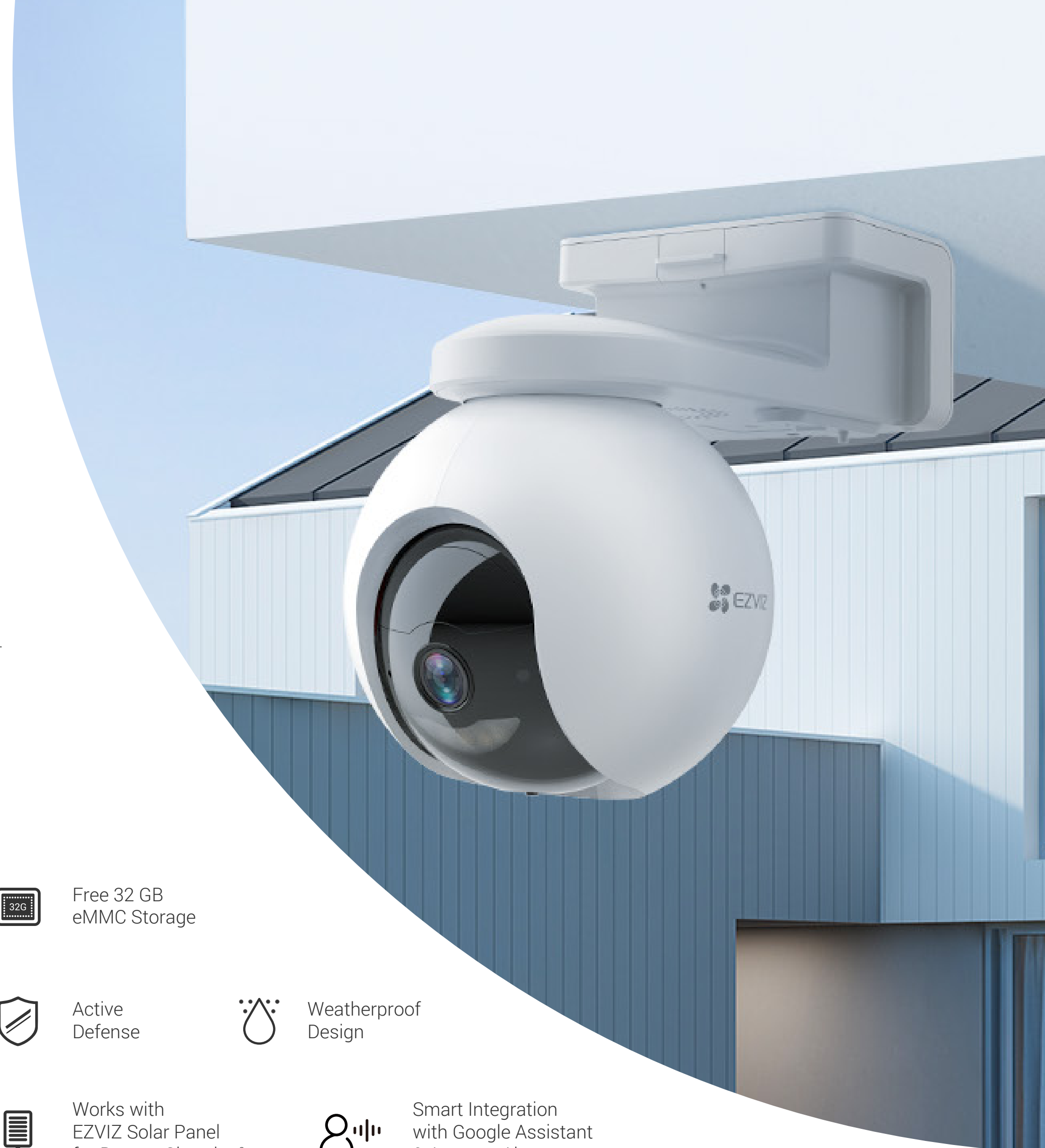
H.265 Video Compression



Works with EZVIZ Solar Panel for Battery Charging²



Smart Integration with Google Assistant & Amazon Alexa



It's easy to put it in action

The HB8 2K+ features possibly the biggest battery capacity among outdoor pan & tilt security cameras in the market. And where other cameras are limited by the socket location or the length of a connecting wire, the wireless HB8 offers limitless options. Set it where you want it – wherever it gets the best views.



2100 Days Battery Life



Stay charged with green energy

Don't feel like climbing up and down a ladder to recharge the camera? Worried about losing power quickly due to frequent activity detection?

Connect your camera to the compatible EZVIZ Solar Panel² for constant power and forget about any low-battery anxieties once and for all.

An eye for all-around protection in 2K+

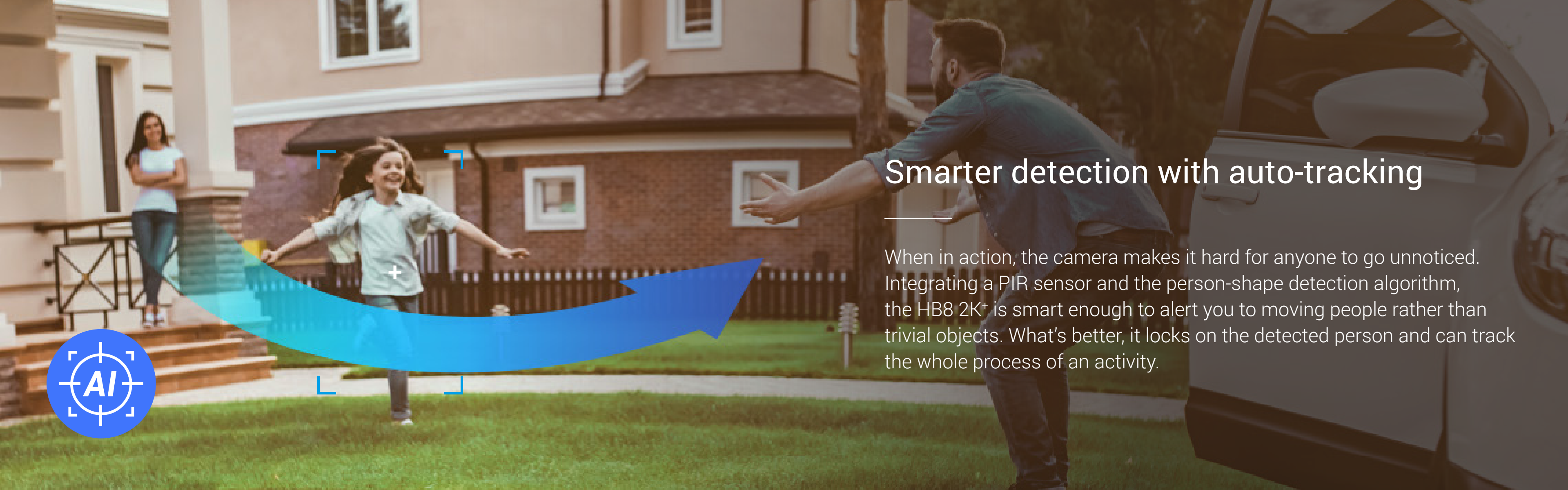
The camera's pan-and-tilt design and 2K+ resolution work in tandem to give you the complete picture with stunning details. These great features help you watch over large open areas with minimal effort.

See in 360°

340°
Horizontal

65°
Vertical





Smarter detection with auto-tracking

When in action, the camera makes it hard for anyone to go unnoticed. Integrating a PIR sensor and the person-shape detection algorithm, the HB8 2K+ is smart enough to alert you to moving people rather than trivial objects. What's better, it locks on the detected person and can track the whole process of an activity.

Never miss a moment with free video storage

You don't need to pay for storage cards or subscription plans before the camera starts saving important moments. The HB8 2K+ is embedded with a large, 32 GB eMMC storage capacity.



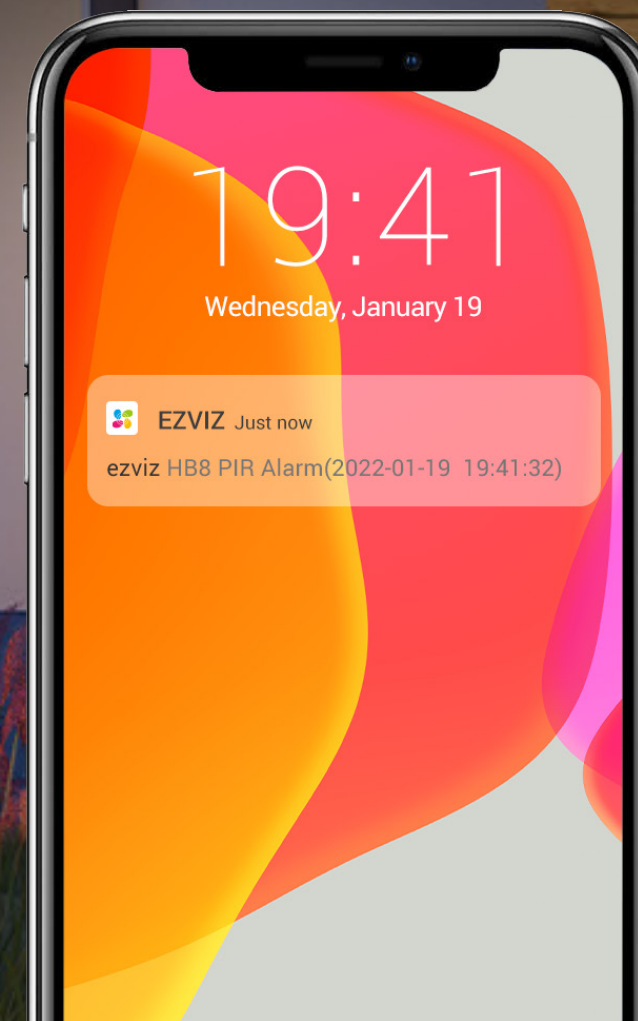
Store 10-minute recordings per day for up to 6 months

Also supports EZVIZ CloudPlay³ for more storage space



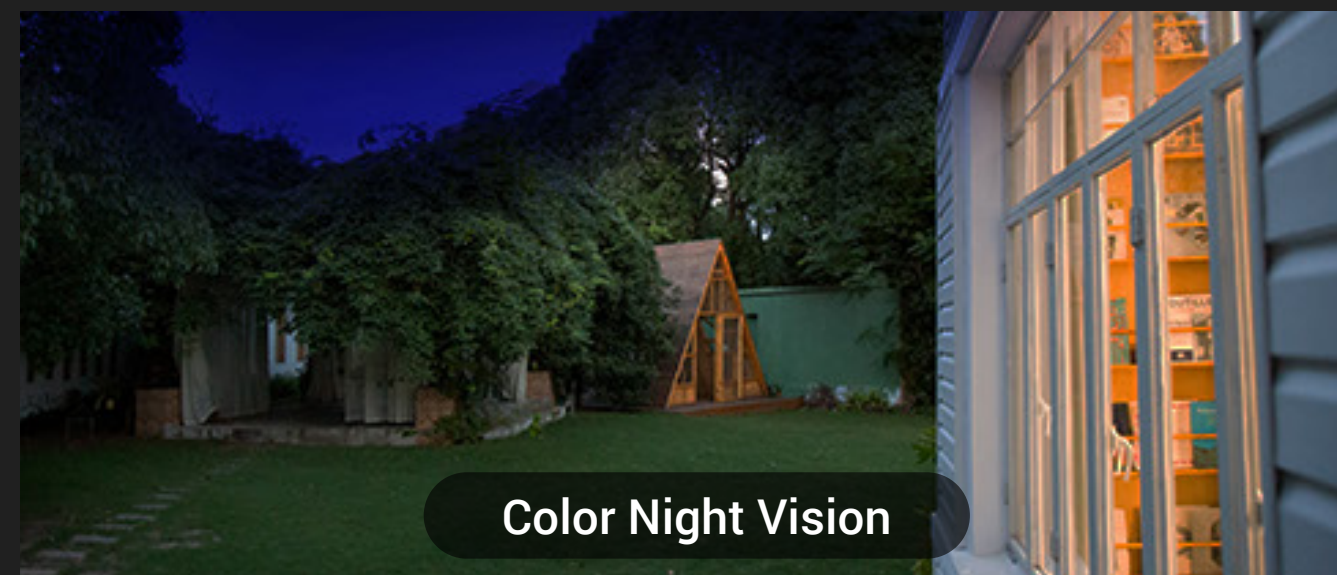
An active guard for your home

The camera's active defense function provides an extra layer of protection. Upon detection of a moving person, the camera will set off a loud siren and flash two spotlights⁴ for immediate on-site deterrence.



Vivid night vision

Thanks to two built-in spotlights, the camera can render vivid color imaging even in pitch-black darkness. This allows you to see crucial details that would otherwise be lost.



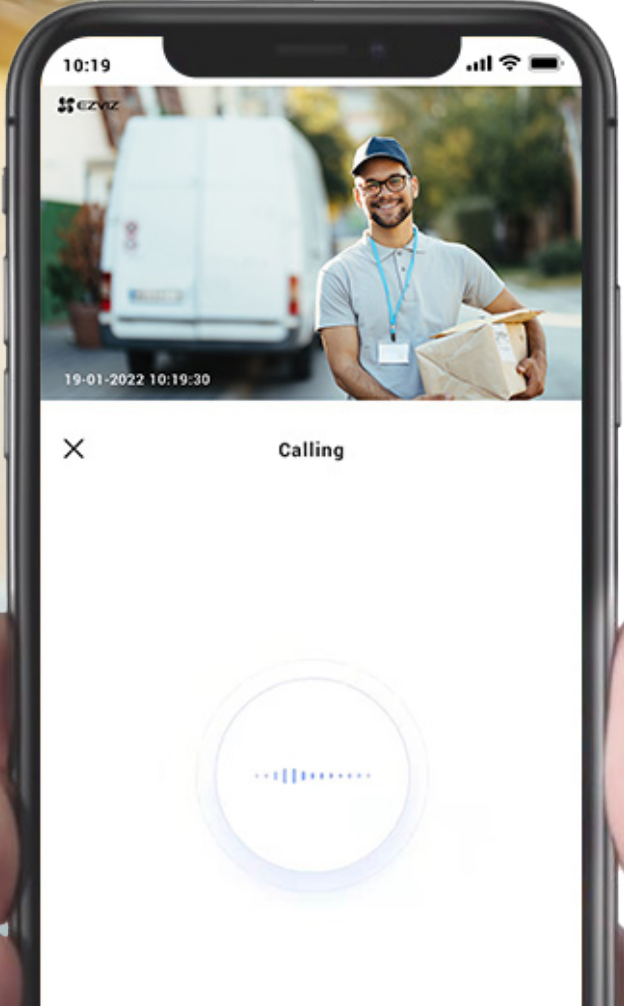
Elegant and durable design

With its elegant design, the HB8 2K+ can fit in any household perfectly. It's also weatherproof to deliver longstanding performance.



How can I help you?

You have a delivery.



Greeting can be this easy

Enjoy two-way communications by simply using your phone. Or, pre-record specific voice messages that automatically play when people are detected on camera.

Smart integration, hands-free control

Easily manage your HB8 2K+ via the EZVIZ App. What's better, you can voice-enable the live viewing with "Hey Google" or "Alexa" to check what's happening on a bigger screen.



It saves money on storage and bandwidth

The camera features the advanced H.265 video compression technology, achieving better video quality with only half the bandwidth and half the storage space required by the previous H.264 video compression standard⁵.

Video Storage



H.265

H.264

Bandwidth

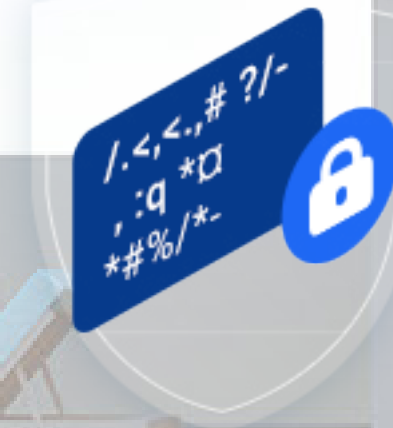


H.265

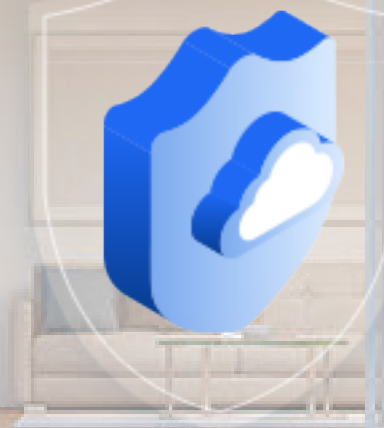
H.264

We protect your data and privacy

Protecting your data and privacy is our highest priority. Data transmission between the camera and the EZVIZ Cloud is encrypted from end to end. Only you have the keys to decrypt your data.



**AES 128-bit
encryption**



**TLS encryption
protocol**



**Multi-Step
authentication**

1 Data from EZVIZ Lab's test results under standard conditions. May vary due to environmental factors and the frequency of camera activities.

2 The solar panel is not included in the kit. Please verify the product compatibility before making a purchase.

3 Cloud storage service is only available in certain markets. Please verify the availability before making any purchase.

4 The spotlights will not flash when the color night vision mode is enabled.

5 Data from EZVIZ Lab's test results under standard conditions. The video compression efficiency will vary with the frequency and complexity of the activity captured, as well as other environmental factors.

Specifications **Model CS-HB8 (4MP)**

Camera

Image Sensor	1/3" 4-Megapixel Progressive Scan CMOS Sensor
Minimum Illumination	0.01 Lux @ (F1.6, AGC ON), 0 Lux with IR (Data is obtained from EZVIZ laboratories)
Shutter Speed	Self-adaptive shutter
Lens	4mm @ F1.6 Viewing angle: 100°(Diagonal), 83°(Horizontal), 44°(Vertical)
PT Angle	Pan: 340°, Tilt: 65°
Day & Night	IR-Cut filter with auto-switching
DNR	3D DNR
Night Vision	Up to 49 ft / 15 m

Video & Audio

Max. Resolution	2560 × 1440
Frame Rate	15fps. Self-Adaptive during network transmission
Video Compression	H.265 / H.264
Video Bit Rate	Ultra-HD; Hi-Def; Standard. Adaptive bit rate.
Audio Bit Rate	Self-Adaptive
Max. Bitrate	2 Mbps

Network

Wi-Fi Standard	IEEE802.11b, 802.11g, 802.11n
Frequency Range	2.4 GHz ~ 2.4835 GHz
Channel Bandwidth	Supports 20 MHz
Security	64 / 128 bit WEP, WPA / WPA2, WPA-PSK / WPA2-PSK
Transmission Rate	11b: 11 Mbps, 11g: 54 Mbps, 11n: 72 Mbps
Wi-Fi Pairing	AP pairing
Protocol	EZVIZ Cloud Proprietary Protocol
Interface Protocol	EZVIZ Cloud Proprietary Protocol
Minimum Network Requirement	4 Mbps

Function

Detection	Smart Human Motion Detection
Two-way Talk	Supports
General Function	Anti-Flicker, Heart Beat, Password Protection, Watermark

Storage

Local Storage	Build-In 32GB eMMC Storage
Cloud Storage	Supports EZVIZ CloudPlay storage (Subscription required)

Specifications

Model CS-HB8 (4MP)

General

Operating Conditions	-20 °C to 50 °C (-4 °F to 122 °F), humidity 95% or less (Non-condensing)
IP Grade	Weatherproof Design
Power Consumption	Max. 10W
Product Dimensions	183 × 116 × 166 mm (7.20 × 4.57 × 6.52 inch)
Packaging Dimensions	216 × 145 × 203 mm (8.50 × 5.71 × 7.99 inch)
Weight	Net: 803 g (28.32 oz) With package: 1060 g (37.39 oz)

Battery

Battery Capacity	10400 mAh
Power Supply	DC 5V / 2A

In the box

- HB8 2K+ Camera
- Drilling Template
- USB Cable
- Screw Kit
- Quick Installation Guide
- Regulatory Information
- Quick Start Guide

Certifications:

CE / FCC / WEEE / RoHS / REACH / UL

Specifications are subject to change without notice. "🌈", "EZVIZ" and other trademarks and logos are the properties of EZVIZ in various jurisdictions.

<https://www.ezvizlife.com/>