

Vandal Resistant PoE IR Illuminator

S-SG6P-IR

- Deliver high power infrared light for CCTV & IP camera at night time and improve performance of camera to get clear pictures.
- High-efficiency, long life span and zero maintenance.
- PoE (Power over Ethernet) powered.



Product Features

- Precise secondary optical technology
The latest LED technology assures outstanding performance of LED with excellent luminous efficiency and more uniform illumination
- Independent innovation of high efficiency power drive schemes
Low failure rate of products is guaranteed because of professional in-house optimized independent circuit technology widely used in our LED illuminators for more than 5 years
- High thermal conductivity aluminum
Excellent thermal management not only reduces excess heat and brightness decay of LED but also ensures efficient, reliable and continuous operation of LED throughout its lifetime as 50,000 hours.
- Manual adjustable photocell and brightness
Easily set the time of Turn-on illuminator to meet any environmental brightness requirement and dim the brightness of illuminator to suitable light effect.
- Vandal resistant
Vandal resistant panel protects against hammer, stone and continuous thumping in a certain range.
- Energy saving technology
All illuminators has energy saving circuit with low electrical power consumption.
- Thinner and lighter design
Our patent owned housing is designed for simple installation and easy operation to reduce construction difficulty.



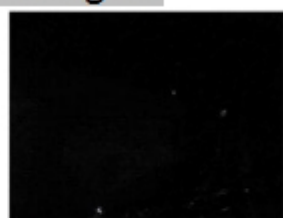
Basic Function

- To improve performance of the weak light camera, thereby enhancing the picture effects at night.
- The function of video analysis at night
- Lower cost of installing and wiring
- Indoor and outdoor use

Viewing picture at night



With IR light

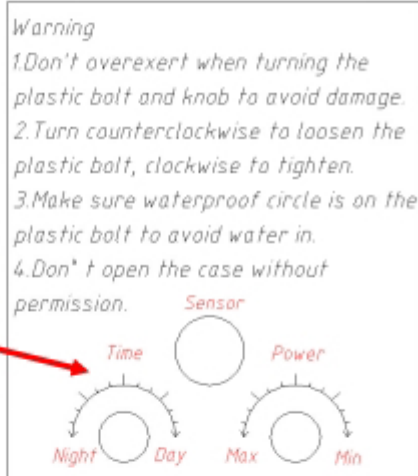


Without IR light

Picture



Adjustment and installation



This side must be downward!

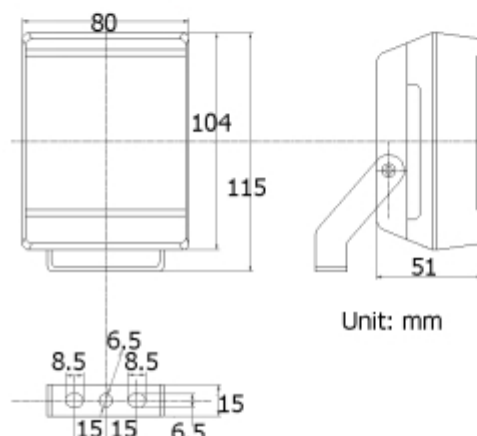
Product Certificate



Technical Specification

- LED type: 6 pieces high power IR LED
- Wavelength: 740nm/850nm/940nm
- Beam angle: 15 to 120°
- Beam distance: 80m to 12m
- Bracket: wall mount bracket
- Voltage: PoE IEEE 802.3af
- Current: 10W(adjustable)
- Day/night switch: automatic
- Working temperatures: -30°C to 50°C
- Protection level: IP65
- Color: black
- Panel: Vandal proof PC panel
- Housing: aluminum die-casting housing
- N.W.: 0.53KG
- G.W.: 0.8KG
- Packing dimension: 145*135*95mm

Drawing



Model for Selection

Model	Beam angle	IR Distance(850nm)
S-SG6P-15-IR	15°	80m
S-SG6P-30-IR	30°	60m
S-SG6P-45-IR	45°	40m
S-SG6P-60-IR	60°	22m
S-SG6P-90-IR	90°	16m
S-SG6P-120-IR	120°	12m

*IR distance is tested by Sony 1/3 CCD Camera with 0.01LX.

To achieve the distance needed, please pay attention to your camera specification and lens before purchase. It is normal phenomenon that distance may vary due to different cameras and lens.