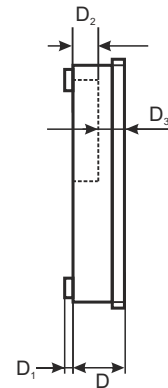
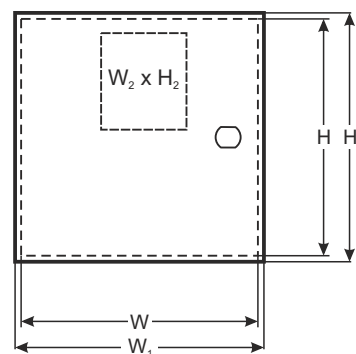


CODE: **AWO601W** v.1.0/II
NAME: **Nedap Power 1M**

EN



DESTINATION

Nedap modules:

9981624 AP7803m – Access Control Controller (AEpu)
9981632 AP7003m – Access control expansion module (AEpack)
9984135 AP7031m – I/O module (AEpack)

Power supply units:

PSC-60A-C*, PSC-100A-C*, PSC-60B-C*, PSC-100B-C*
SCP-35-12, SCP-50-12, SCP-75-12, SCP-35-24, SCP-50-24, SCP-75-24
AD-55A, AD-55
RS-75-12 (LRS-75-12)
PSB-12V2A; PSB-12V3A
PSG2-12V2A; PSG2-12V3A

*PKAZ041 – required to connect power supply.

TECHNICAL DATA

External dimensions of the enclosure:	W=230, H=372, D+D ₁ =80+8 [±2 mm]
External dimensions of the front panel:	W ₁ =235, H ₁ =375 [±2 mm]
Mounting plate dimensions:	W ₂ =82, H ₂ =121 [±2 mm]
Working depth 1/2:	D ₂ =40, D ₃ =40 [±2 mm]
Battery space:	2x7Ah, 1x17/18Ah / 12 V Sealed Lead Acid (SLA)
Weight net/gross:	2,514 / 2,668 [kg]
Operating environment:	class II, -10°C÷ 40°C
Material description:	sheet steel DC01, thickness: 0,7mm, protection anticorrosion, color: RAL 9003
Destination:	indoor
Tamper protection:	1 x microswitch: opening, 0,5 A@50 V DC max. NC - normally closed contacts
Closing:	sheet-metal screws x 4
Notes:	optional: lockable, distance from wall (mounting surface) - 8mm
Declaration, warranty:	CE, 2 year from the production date

Sample configurations:

