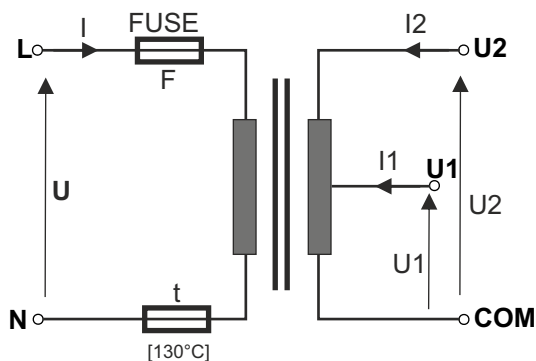
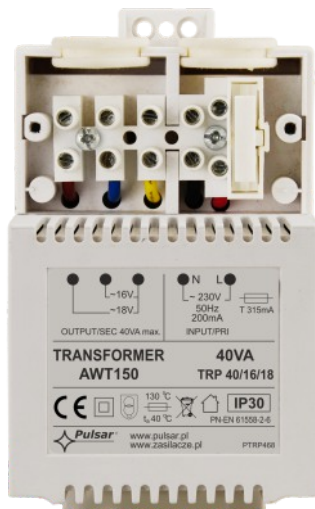


CODE: **AWT150** v 1.3/IX
NAME: **TRANSFORMER TRP 40/16/18**

EN



Technical data of transformers: TRP							
Tab. 1							
CODE NAME	S	U	I	U1 or U2	I1 lor I2	F	t
AWT150 TRP 40/16/18	40VA	230 V AC	0,20A	16 V or18 V	2,2A or 2,0A	T 315mA/250V	130°C

DESTINATION

The transformers are destined for supplying devices requiring AC voltage U1 or U2.

TECHNICAL DATA

Enclosure:	PC/ABS in class UL 94 V-0, IP30
Dimensions:	Fig.1 TRP 40
Net/gross weight:	1,12 / 1,17 [kg] TRP 40
Installation:	- to be mounted on a flat surface, cheese head screws required x4 - for mounting on a DIN rail, required bracket: DIN1 - dedicated to SATEL's enclosures: OPU3-P/OPU4-P/OPU4-PW
Supply voltage:	230 V AC (-15%+10%), 50Hz
Current consumption I:	tab.1.
Output voltage U1 or U2:	tab.1.
Rated power S:	tab.1.
Rated output current I1 or I2:	tab.1.
Short-circuit protection F:	glass fuse tab.1.
Over-load protection t:	glass fuse tab.1. / thermal fuse 130°C (non-returnable)
Operating conditions:	II environment class, -10°C – +40°C, Ta 40B
Declarations, warranty:	CE, 2 years
Notes:	leads on connectors AWG 24-12 (2,5mm ²), kit for mounting (sheet metal screws 2,9 x 9,5 – 4 pcs. and plugs)

Dimensions of transformers series: TRP 40VA

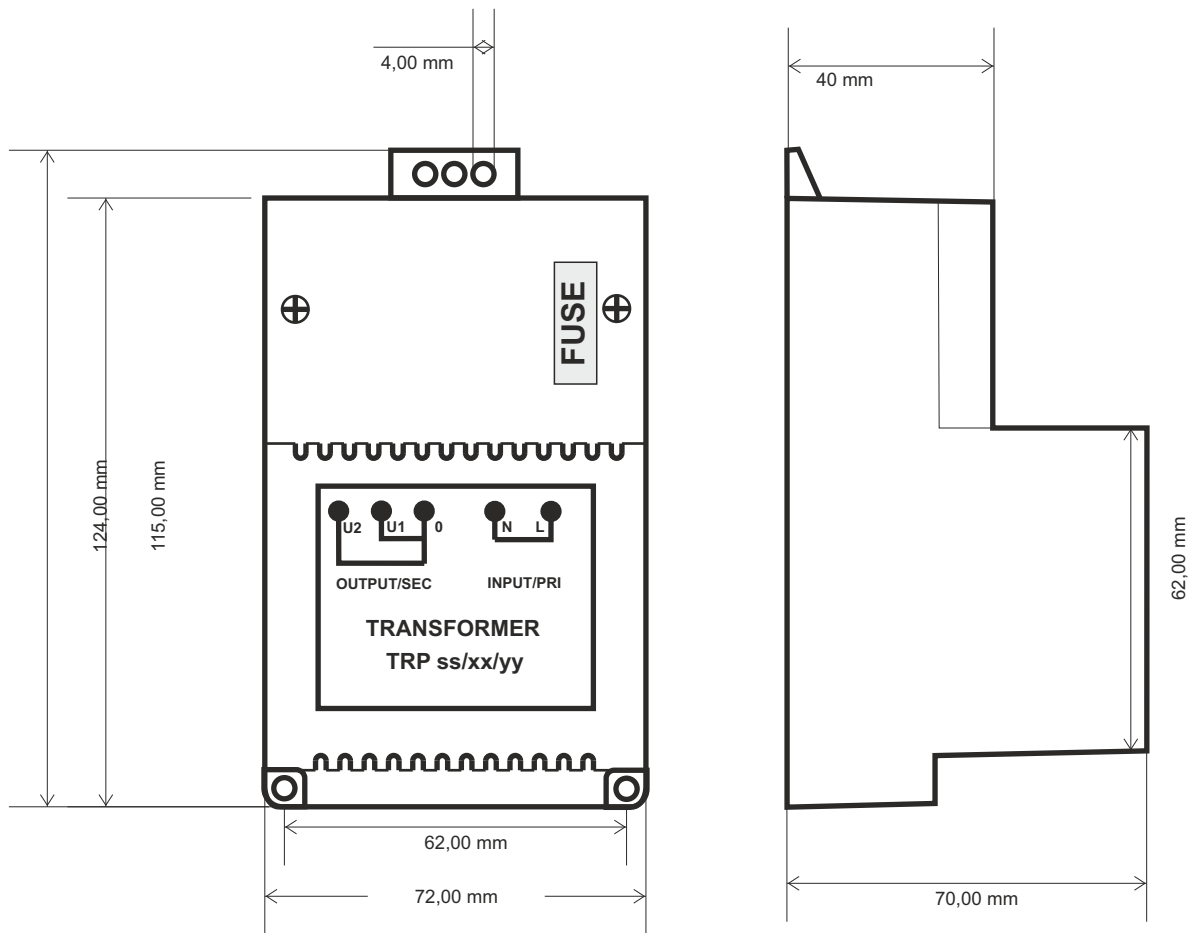


Fig.1