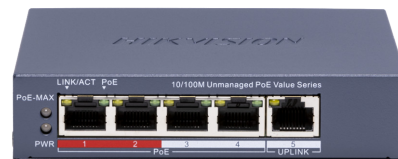


DS-3E0105P-E/M(C)**4 Ports Fast Ethernet Unmanaged PoE Switch**

The device is a 10/100 Mbps PoE switch, providing PoE power supply technology and fast network design on the basis of network access to ensure stable data upload. The switch supports long-range function.

- Intelligent PoE Management
- Up to 300 m Long Range PoE Transmission
- 6 kV Surge Protection to Improve Reliability in Harsh Environment

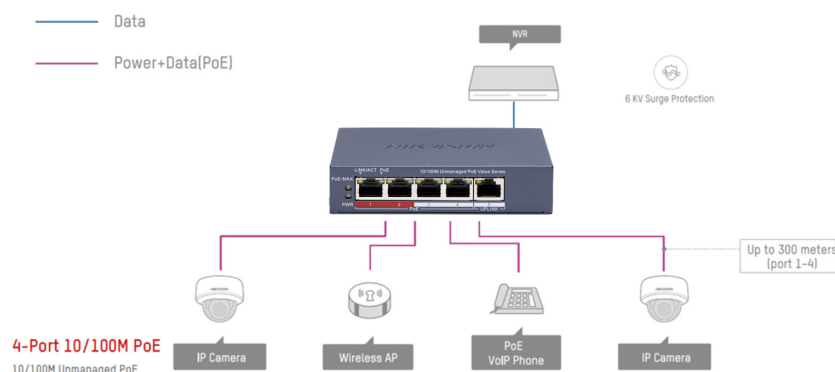
▪ Specification

General	
Shell	Metal material, fan-free design
Net Weight	0.2 kg (0.44 lb)
Gross Weight	0.5 kg (1.1 lb)
Dimensions (W × H × D)	121.1 mm × 27.6 mm × 83.1 mm (4.77" × 1.08" × 3.27")
Operating Temperature	0 °C to 40 °C (32 °F to 104 °F)
Storage Temperature	-40 °C to 85 °C (-40 °F to 185 °F)
Operating Humidity	5% to 95% (no condensation)
Relative Humidity	5% to 95% (no condensation)
Power Supply	54 V DC, 0.92 A
Max. Power Consumption	50 W
Power Consumption in Idle	5 W
Installation Mode	Desk-Mounted, Wall-Mounted
Surge Protection	6 kV
Network Parameters	
Ports	4 × 10/100 Mbps PoE port, 1 × 10/100 Mbps RJ45 port
MAC Address Table	2 K
Switching Capacity	1 Gbps
Packet Forwarding Rate	0.744 Mpps
Internal Cache	768 Kbits
PoE Power Supply	
PoE Standard	IEEE 802.3af, IEEE 802.3at
PoE Power Pin	End-span: 1/2(-), 3/6(+)
PoE Port	PoE: Ports 1 to 4
Max. Port Power	30 W
PoE Power Budget	45 W
Dialing Function	
Long Range	Ports 1 to 4: up to 300 m. Long range performance may vary depend on camera model or cable condition.
Approval	
EMC	CE-EMC (EN 55032: 2015+A11: 2020, EN IEC 61000-3-2: 2019, EN 61000-3-3: 2013+A1: 2019, EN 50130-4: 2011+A1: 2014, EN 55035: 2017+A11: 2020), RCM (AS/NZS CISPR 32: 2015), IC (ICES-003: Issue 7:2020)
Safety	CB (AMD1:2009, AMD2:2013, IEC 62368-1: 2014 (Second Edition)), CE-LVD (EN 62368-1: 2014+A11: 2017), UL (UL 60950-1)
Chemistry	CE-RoHS (2011/65/EU), WEEE (2012/19/EU), Reach (Regulation (EC) No.1907/2006)

▪ Available Model

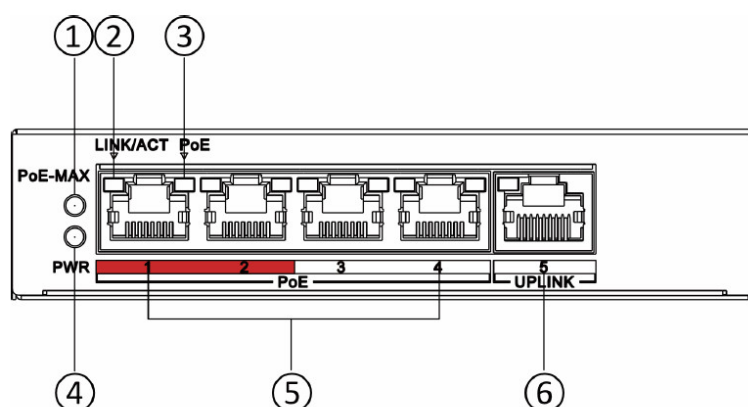
DS-3E0105P-E/M(C)

Typical Application

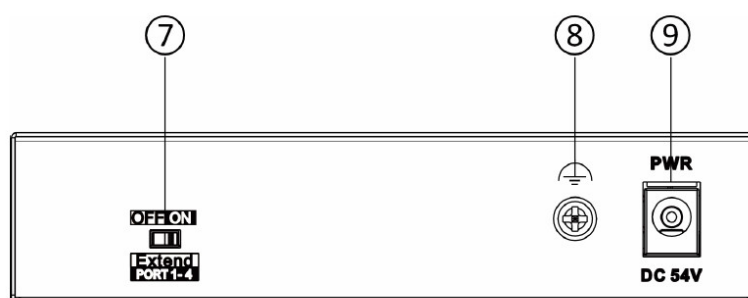


Physical Interface

Front Panel



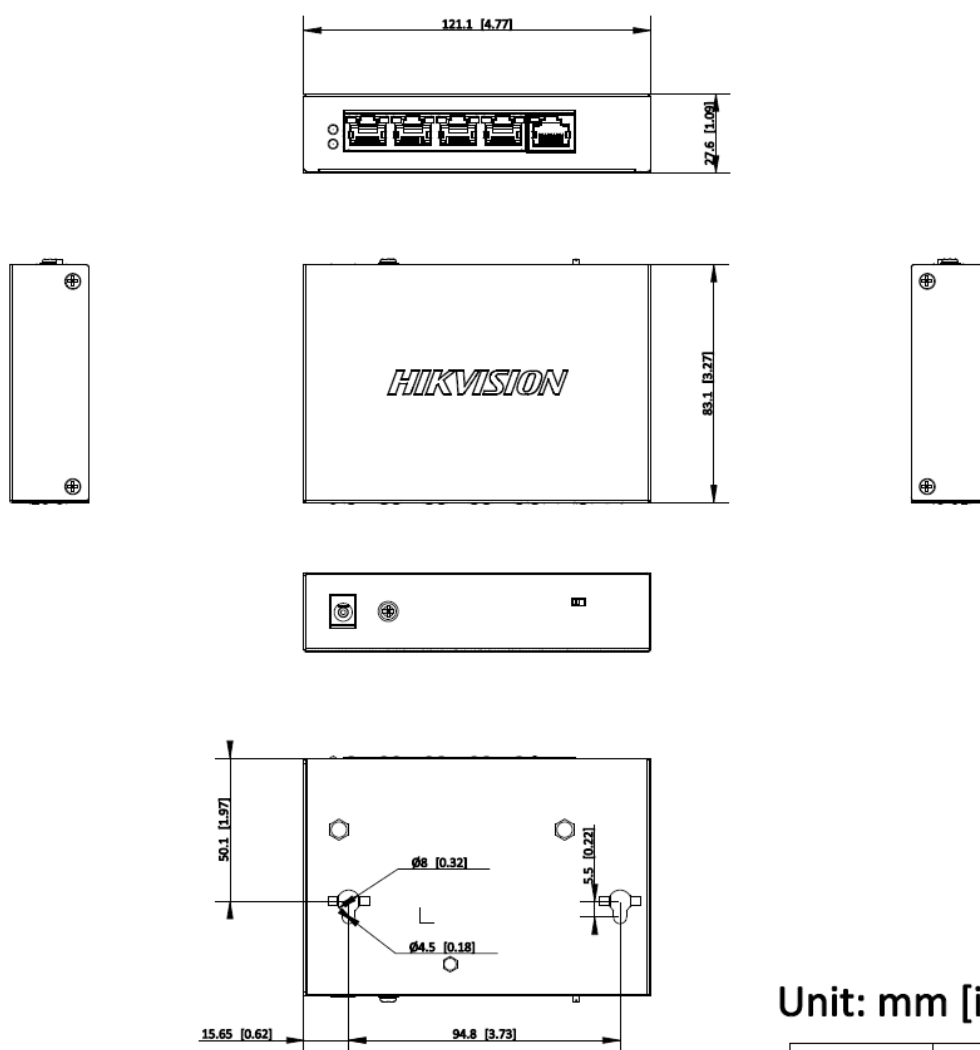
Rear Panel



No.	Indicator/Port	Description
①	PoE-MAX Indicator	<ul style="list-style-type: none"> ● Solid on: The output power of the switch is about to reach or has reached the upper limit. The power supply may be abnormal if more devices are connected. ● Unlit: The switch does not supply power to a powered device (PD), or the switch supplies power to a PD normally and the output power of the switch does not reach the upper limit. <p>Note: About five seconds after the output power of the switch returns to normal, the PoE-MAX indicator will be unlit.</p>
②	LINK/ACT Indicator	<ul style="list-style-type: none"> ● Solid on: The port is connected. ● Flashing: The port is transmitting data. ● Unlit: The port is disconnected or connection is abnormal.

③	PoE Indicator	<ul style="list-style-type: none"> ● Solid on: The switch supplies power to a PD normally. ● Unlit: The switch is disconnected from a PD or power supply is abnormal.
④	PWR Indicator	<ul style="list-style-type: none"> ● Solid on: The switch is powered on normally. ● Unlit: No power supply is connected or power supply is abnormal.
⑤	10/100 Mbps PoE RJ45 Port	Used for connection to a PD via a network cable.
⑥	10/100 Mbps RJ45 Port	Used for connection to another device via a network cable.
⑦	EXTEND DIP Switch	<p>Enable or disable long-range transmission (EXTEND mode).</p> <ul style="list-style-type: none"> ● When the DIP switch is set to “ON”, the corresponding ports support up to 300 m network transmission at a port rate of 10 Mbps. ● When the DIP switch is set to “OFF”, the corresponding ports support up to 100 m network transmission at a port rate of 100 Mbps.
⑧	Grounding Terminal	Used for connection to a grounding cable to protect the switch from lightning.
⑨	Power Supply	Use the attached power adapter and power cord to connect the switch to a socket.

Dimension



Unit: mm [inch]

SCALE	1:1
-------	-----

See Far, Go Further



www.hikvision.com
support@hikvision.com

