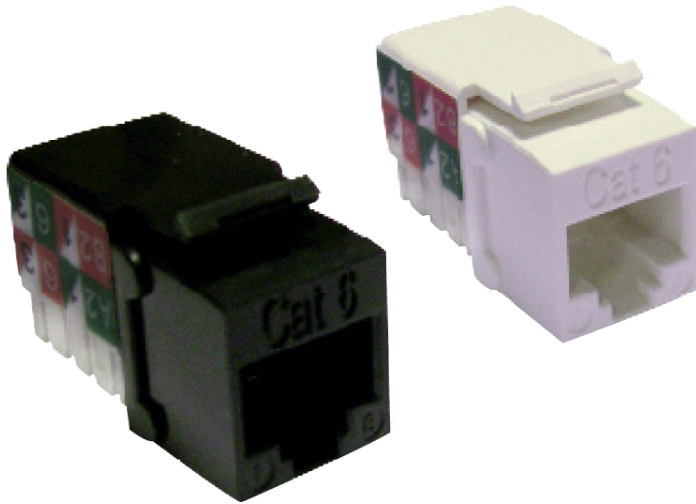


# Excel Category 6 Unscreened Twisted Pair (UTP) Keystone Jack Outlets



X 25 Year System Warranty

X Supports Gigabit Ethernet

X Choice of Colours

X IDC Punchdown Termination

X 3P Verified

## Features

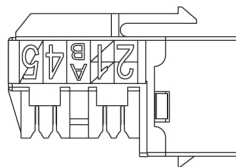
- 25 Year System Warranty
- Choice of Colours
- 3P Verified
- Delta 4 & 6 Connector Channel Compliance
- Mounts in either panel or shutter
- No.2 cabling system by market share, as reported by BSRIA
- Supports Gigabit Ethernet
- IDC Punchdown Termination
- Category 6 compliant
- IDC point at 90° to jack
- Lifetime Product Warranty

## Product Overview

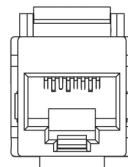
As an alternative to the one piece shuttered Excel module range we offer the Excel Keystone Jack. Suitable for mounting in a range of faceplates, shutters and a 1U 24 port frame, these jacks are quick and easy to install.

Each Excel Plus Keystone Jack is manufactured and tested to the ANSI/TIA/EIA 568-B.2.1, ISO/IEC 11801 Second Edition and EN 50173-1:2007 Category 6 Specifications. Termination can be made using 110 compatible tooling.

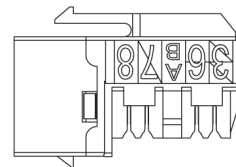
Side View



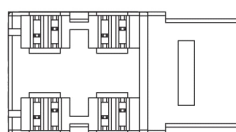
Front View



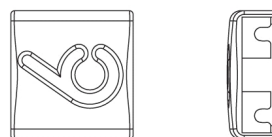
Side View



Bottom View



Wire Cap



## Performance Overview

Excel Category 6 Keystone jacks are manufactured and tested to the Category 6 performance standards defined by the TIA, ISO and EN standards' bodies. A range of performance characteristics are tested up to 250MHz including return loss, attenuation and near end cross talk (NEXT) and far end cross talk (FEXT). Both Worst Case and Power Sum Test methods are applied. Actual performance exceeds the required standard - when tested in isolation and in circuit - resulting in sufficient headroom for even the most demanding applications.

As well as providing link and channel compliance - when installed with Excel category 6 components - with the aforementioned specification - the keystone jack is also backward compatible with Category 5 and 5e components.

## Typical Applications

- 10Base-T Ethernet
- 100BASE-TX Fast Ethernet
- 1000BASE-T Gigabit Ethernet
- 155 Mbps ATM
- 622 Mbps ATM
- Token Ring

## Performance / Specification Table

Specification	Category 6 · 2nd Edition ISO/IEC 11801 · EN 50173-1:2007 · ANSI/TIA/EIA-568-B.2-1
Wiring Specification	T568A & T568B
Dimensions	16.5mm wide x 19.2mm high x 30.9mm deep
Installation Recommendation	Suits outlet frames with 14.60 x 16.10mm jack opening / 19.20mm spring latch height - keystone
RJ45 Jack	Min life 750 insertions
RJ45 Jack	50 µin (microinch) Gold plate over 100 µin (microinch) Nickel undercoat contact pins
IDC Contacts:	Phosphor Bronze C5191R-H (Tin over Nickel undercoat) Suitable for 110 compatible tooling. Maximum 200 reterminations
Keystone Jack Housing:	ABS High-Impact UL94V-0 Thermoplastic
IDC Plastic:	Polycarbonate Resin High-Impact UL94V-0 Thermoplastic
Contact Compatibility:	22 to 26 AWG Solid and 24 AWG Stranded wire
Operating Temperature Range:	-20 to +60 °C
Storage Temperature Range:	-40 to +68 °C
NEXT at 250MHz	Category 6 39.50dB @250MHz (Power Sum)
FEXT at 250MHz	Category 6 26.20dB @250MHz (Power Sum)

## Typical Performance Data

Frequency (MHz)	Insertion Loss (dB)		NEXT (dB)		FEXT (dB)		RL (dB)		Prop. Delay (ns)		Delay Skew(ns)	
	Limit (max)	Typical	Limit (min)	Typical	Limit (min)	Typical	Limit (min)	Typical	Limit (max)	Typical	Limit (max)	Typical
1	0.1	0.0	75.0	95.6	75.0	91.0	30.0	47.1	2.5	2.5	1.25	1.25
4	0.1	0.0	75.0	84.1	71.1	79.2	30.0	45.8				
8	0.1	0.1	75.0	78.6	65.0	73.6	30.0	44.8				
10	0.1	0.1	74.0	76.3	63.1	71.6	30.0	44.0				
16	0.1	0.1	69.9	72.2	59.0	67.6	30.0	42.0				
20	0.1	0.1	68.0	70.1	57.1	65.7	30.0	40.3				
25	0.1	0.1	66.0	68.3	55.1	63.9	30.0	38.3				
31.25	0.1	0.1	64.1	66.3	53.2	62.0	30.0	36.4				
62.5	0.2	0.1	58.1	60.1	47.2	55.7	28.1	29.8				
100	0.2	0.2	54.0	55.8	43.1	52.0	24.0	26.0				
200	0.3	0.2	48.0	50.6	37.1	45.7	18.0	19.9				
250	0.3	0.3	46.0	47.9	35.1	43.6	16.0	18.0				

## Part Number Information

Part No.	Description
100-011	Category 6 (UTP) Unscreened Keystone Jack - White
100-011-BK	Category 6 (UTP) Keystone Jack 90deg - Black
100-011-RD	Category 6 (UTP) Unscreened Keystone Jack - Red
100-011-GN	Category 6 (UTP) Unscreened Keystone Jack - Green
100-011-BU	Category 6 (UTP) Unscreened Keystone Jack - Blue
100-011-YW	Category 6 (UTP) Unscreened Keystone Jack - Yellow

## System Warranty

The Excel System Warranty provides a 25-year product and applications assurance of compliance with the industry performance standard appropriate to the class of cabling installed. The warranty may be applied for by an accredited Excel Partner who has designed, supplied and installed the said system.



Excel is a world-class premium performing end-to-end infrastructure solution - designed, manufactured, supported and delivered - without compromise.

Contact us at [sales@excel-networking.com](mailto:sales@excel-networking.com)

