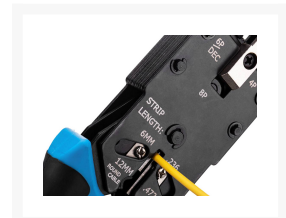
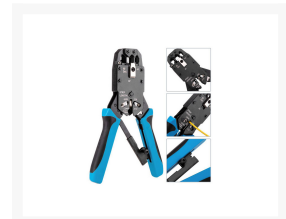
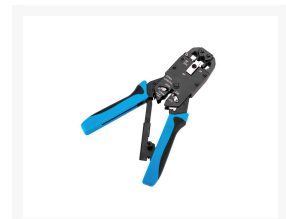
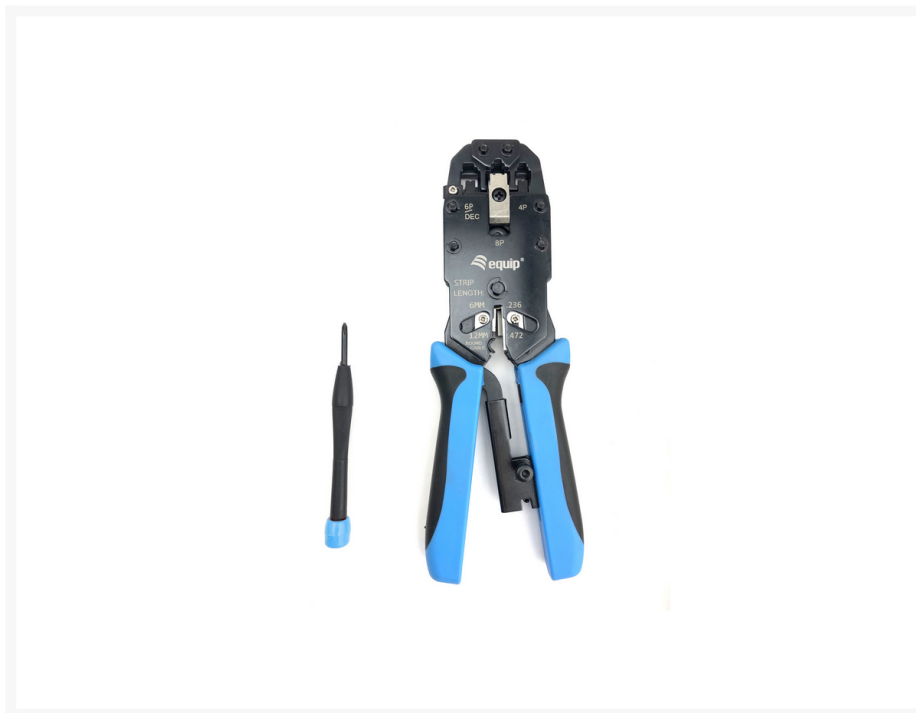
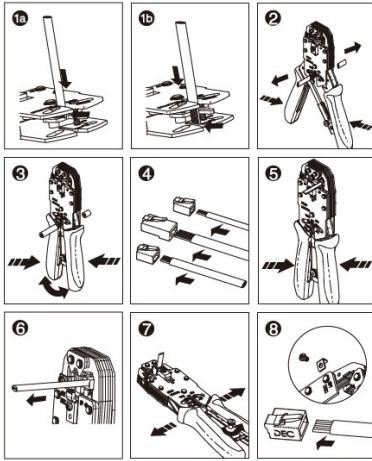


129409 Professional Modular Crimping Tool

Product Images





Instructions
 To open the handles squeeze handles until it stops.
 (1a) Insert the 4P or 6P cable from the two-bladed side of the stripper until it touches the stop guide (stripping length 6mm)
 (1b) Insert the 8P cable between the two stripper blades and let it extend a little over the lower cut blade.
 (2) Squeeze handles until stop, keep the cable perpendicular and then pull from the tool.
 (3) Insert round cables into the round stripping hole, squeeze handles until stop, turn the tool in counter clockwise direction and the cable in clockwise direction simultaneously, pull from the tool.
 (4) Insert the stripped cable into the plug and make sure that the left wire at one end matches the right wire at the other end.
 (5) Place the modular plug with cable into the tool's holder. Be sure the stripped wire is between the tab and the gold contacts. Squeeze the handles until stop.
 (6) Remove the crimped plug from the tool.
 (7) To release the ratchet turn the screw on the ratchet in counterclockwise direction.
 (8) To crimp DEC plugs remove the screw on the left side of the 6P holder, insert the DEC plug with cable into the 6P holder and squeeze handles until stop.



Short Description

- Multifunctional crimping tool for modular plugs
- Suitable for 4P/2C, 4P/4C, 6P/4C, 6P/6C, 8P/8C, and DEC connectors
- Suitable for RJ45, RJ12, RJ11 and DEC Modular plug
- With ratchet function
- High quality metal design
- Screwdriver included

Description

The equip® Professional Modular Crimping Tools is sturdy and versatile, also coming with stripping, cutting and ratchet function to make it even more powerful.

Additional Information

Color	Blue
EAN	4015867227794
Model Number	129409
Approval and Compliance	RoHS
Package Contents	129409
Dimensions (W x D x H)	72.5 x 23 x 204 mm
Product weight (kg)	0.525

