



Cable ID: NCN-P1C6U-10CBL

Date / Time: 10/21/2024 01:42:46 PM

Headroom 9.8 dB (NEXT 45-78)

Test Limit: TIA Cat 6 Channel

Cable Type: Cat 6 U/UTP

NVP: 71.0%

Operator: WLQ

Software Version: V6.6 Build 2

Limits Version: V7.6

Calibration Date:

Main (Module): 06/30/2020

Remote (Module): 06/30/2020

Test Summary: PASS

Model: DSX-8000

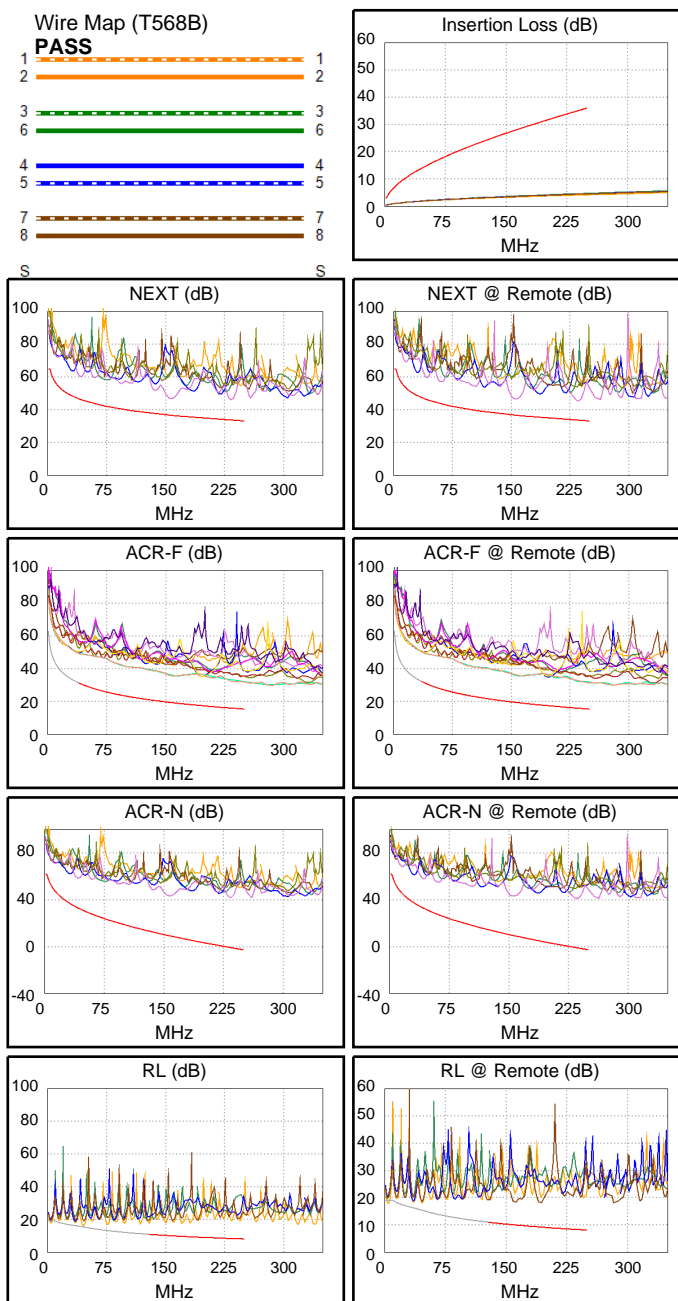
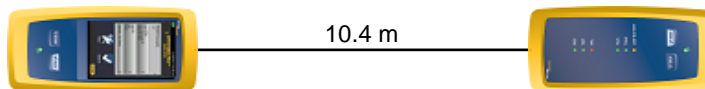
Main S/N: 1903179

Remote S/N: 1852211

Main Adapter: DSX-CHA804

Remote Adapter: DSX-CHA804

Length (m), Limit 100.0	[Pair 12]	10.4
Prop. Delay (ns), Limit 555	[Pair 36]	51
Delay Skew (ns), Limit 50	[Pair 36]	2
Resistance (ohms)	[Pair 12]	3.02
Insertion Loss Margin (dB)	[Pair 36]	31.3
Frequency (MHz)	[Pair 36]	250.0
Limit (dB)	[Pair 36]	35.9



Worst Case Margin Worst Case Value

PASS	MAIN	SR	MAIN	SR
Worst Pair	45-78	45-78	45-78	45-78
NEXT (dB)	10.2	9.8	12.4	11.8
Freq. (MHz)	157.5	155.5	234.0	236.0
Limit (dB)	36.6	36.7	33.6	33.5
Worst Pair	45	45	45	78
PS NEXT (dB)	13.0	12.6	14.7	14.0
Freq. (MHz)	157.5	155.5	234.5	236.0
Limit (dB)	33.7	33.8	30.6	30.6

PASS	MAIN	SR	MAIN	SR
Worst Pair	45-78	45-78	45-78	78-45
ACR-F (dB)	16.1	16.1	16.1	16.1
Freq. (MHz)	250.0	237.0	250.0	250.0
Limit (dB)	15.3	15.8	15.3	15.3
Worst Pair	45	45	45	45
PS ACR-F (dB)	17.7	17.3	17.9	17.4
Freq. (MHz)	237.0	245.5	248.0	247.5
Limit (dB)	12.8	12.5	12.4	12.4

N/A	MAIN	SR	MAIN	SR
Worst Pair	12-78	12-78	45-78	45-78
ACR-N (dB)	20.6	20.0	42.8	42.3
Freq. (MHz)	3.5	3.3	234.0	236.0
Limit (dB)	60.2	60.9	-1.0	-1.2
Worst Pair	78	78	45	78
PS ACR-N (dB)	21.1	20.4	45.1	44.5
Freq. (MHz)	4.4	3.3	234.5	236.0
Limit (dB)	55.7	58.4	-4.0	-4.1

PASS	MAIN	SR	MAIN	SR
Worst Pair	12	78	12	78
RL (dB)	6.7	7.6	7.7	8.7
Freq. (MHz)	129.5	128.5	171.5	192.5
Limit (dB)	10.9	10.9	9.7	9.2

Compliant Network Standards:
 10BASE-T 100BASE-TX 100BASE-T4
 1000BASE-T 2.5GBASE-T 5GBASE-T
 ATM-25 ATM-51 ATM-155
 100VG-AnyLan TR-4 TR-16 Active
 TR-16 Passive