



Cable ID: NCN-P1C6U-1CBL

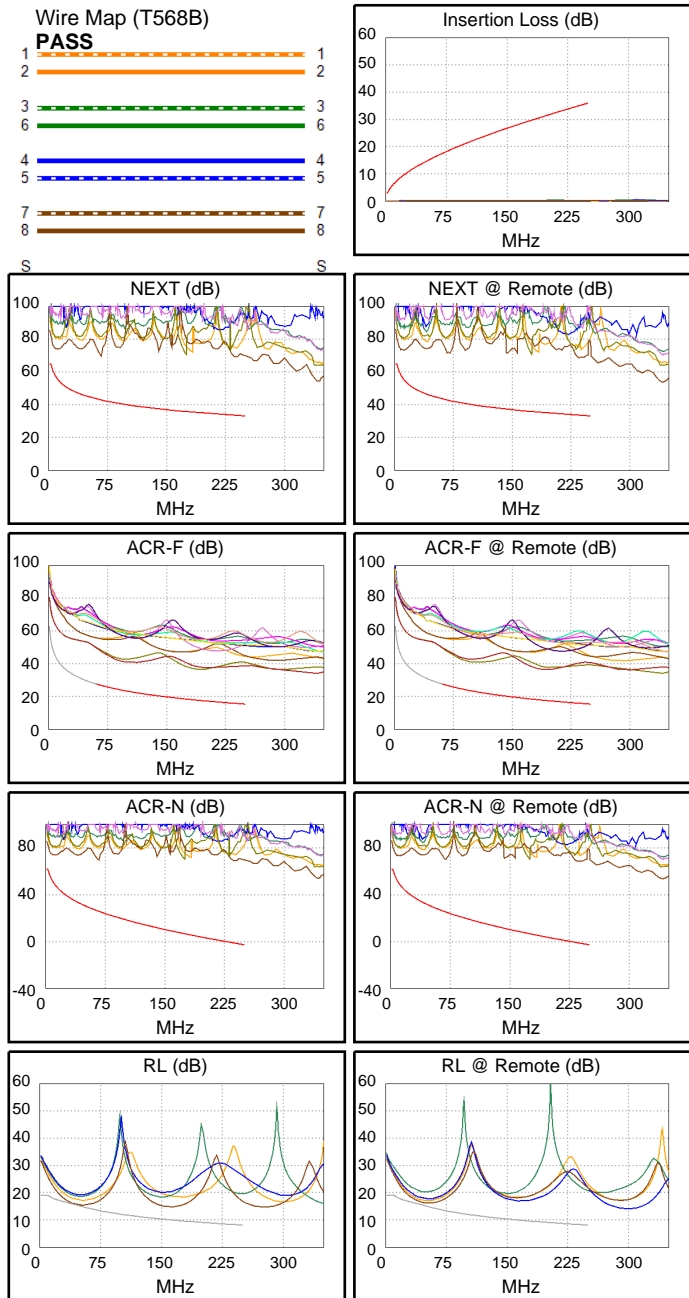
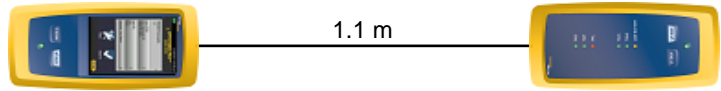
Date / Time: 10/21/2024 10:35:07 AM
Headroom 14.7 dB (NEXT 36-45)
Test Limit: TIA Cat 6 Channel
 Cable Type: Cat 6 U/UTP
 NVP: 71.0%

Operator: WLQ
 Software Version: V6.6 Build 2
 Limits Version: V7.6
 Calibration Date:
 Main (Module): 06/30/2020
 Remote (Module): 06/30/2020

Test Summary: PASS

Model: DSX-8000
 Main S/N: 1903179
 Remote S/N: 1852211
 Main Adapter: DSX-CHA804
 Remote Adapter: DSX-CHA804

Length (m), Limit 100.0	[Pair 12]	1.1
Prop. Delay (ns), Limit 555	[Pair 36]	5
Delay Skew (ns), Limit 50	[Pair 12]	0
Resistance (ohms)	[Pair 12]	0.56
Insertion Loss Margin (dB)	[Pair 36]	33.0
Frequency (MHz)	[Pair 36]	220.0
Limit (dB)	[Pair 36]	33.3



Worst Case Margin Worst Case Value

PASS	MAIN	SR	MAIN	SR
Worst Pair	36-45	36-45	36-45	36-45
NEXT (dB)	15.4	14.7	35.3	34.9
Freq. (MHz)	5.0	5.3	238.0	237.0
Limit (dB)	61.5	61.1	33.5	33.5
Worst Pair	36	36	36	36
PS NEXT (dB)	16.7	16.0	37.0	36.8
Freq. (MHz)	5.5	5.0	238.0	239.0
Limit (dB)	58.3	59.0	30.5	30.5

PASS	MAIN	SR	MAIN	SR
Worst Pair	45-36	36-45	36-45	45-36
ACR-F (dB)	17.6	17.6	19.0	18.9
Freq. (MHz)	97.8	97.8	194.5	194.5
Limit (dB)	23.5	23.5	17.5	17.5
Worst Pair	36	36	45	36
PS ACR-F (dB)	20.0	19.9	21.8	21.4
Freq. (MHz)	1.1	1.0	194.5	194.5
Limit (dB)	59.2	60.3	14.5	14.5

N/A	MAIN	SR	MAIN	SR
Worst Pair	36-45	36-45	36-45	36-45
ACR-N (dB)	19.7	18.4	70.1	69.6
Freq. (MHz)	4.4	3.0	238.0	237.0
Limit (dB)	58.2	61.5	-1.4	-1.3
Worst Pair	36	36	36	36
PS ACR-N (dB)	21.1	19.7	71.7	71.6
Freq. (MHz)	4.4	3.3	238.0	239.0
Limit (dB)	55.7	58.4	-4.4	-4.5

N/A	MAIN	SR	MAIN	SR
Worst Pair	78	78	78	78
RL (dB)	0.1	0.8	4.9	1.7
Freq. (MHz)	45.0	41.0	166.5	57.0
Limit (dB)	15.5	15.9	9.8	14.4

Compliant Network Standards:
 10BASE-T 100BASE-TX 100BASE-T4
 1000BASE-T 2.5GBASE-T 5GBASE-T
 ATM-25 ATM-51 ATM-155
 100VG-AnyLan TR-4 TR-16 Active
 TR-16 Passive