



**Cable ID: NCN-P1C6U-20CBK**

Date / Time: 10/21/2024 01:33:05 PM

Headroom 7.0 dB (NEXT 45-78)

Test Limit: TIA Cat 6 Channel

Cable Type: Cat 6 U/UTP

NVP: 71.0%

Operator: WLQ

Software Version: V6.6 Build 2

Limits Version: V7.6

Calibration Date:

Main (Module): 06/30/2020

Remote (Module): 06/30/2020

**Test Summary: PASS**

Model: DSX-8000

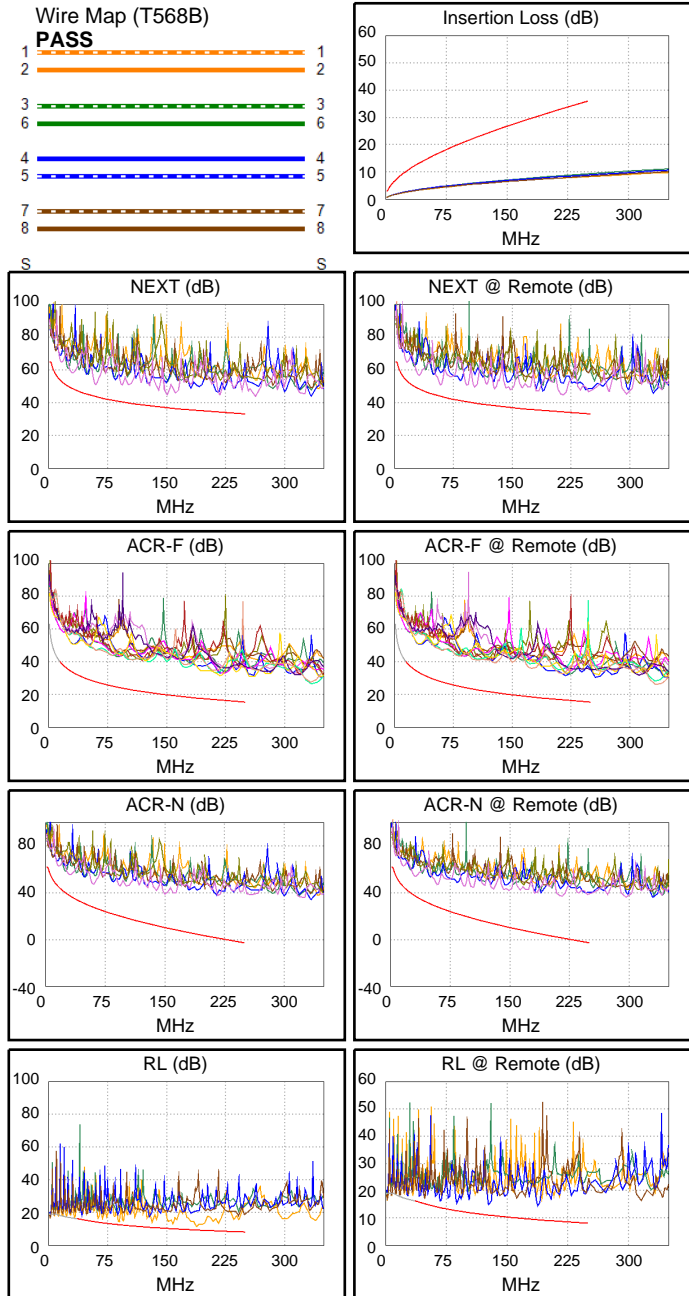
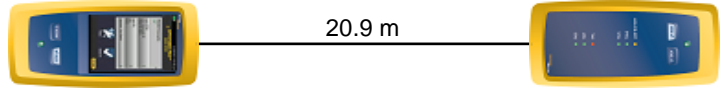
Main S/N: 1903179

Remote S/N: 1852211

Main Adapter: DSX-CHA804

Remote Adapter: DSX-CHA804

Length (m), Limit 100.0	[Pair 12]	20.9
Prop. Delay (ns), Limit 555	[Pair 36]	101
Delay Skew (ns), Limit 50	[Pair 36]	3
Resistance (ohms)	[Pair 12]	5.93
Insertion Loss Margin (dB)	[Pair 36]	26.7
Frequency (MHz)	[Pair 36]	250.0
Limit (dB)	[Pair 36]	35.9



**Worst Case Margin Worst Case Value**

PASS	MAIN	SR	MAIN	SR
Worst Pair	45-78	45-78	45-78	45-78
<b>NEXT (dB)</b>	7.5	7.0	10.8	10.6
Freq. (MHz)	60.0	59.0	218.0	216.0
Limit (dB)	43.7	43.8	34.1	34.2
Worst Pair	78	78	78	78
<b>PS NEXT (dB)</b>	9.7	9.0	11.5	12.7
Freq. (MHz)	59.5	58.5	217.0	215.5
Limit (dB)	41.0	41.1	31.2	31.3

PASS	MAIN	SR	MAIN	SR
Worst Pair	78-12	12-78	78-12	12-78
<b>ACR-F (dB)</b>	14.9	14.9	14.9	14.9
Freq. (MHz)	218.5	218.5	218.5	218.5
Limit (dB)	16.5	16.5	16.5	16.5
Worst Pair	12	78	12	78
<b>PS ACR-F (dB)</b>	15.9	15.9	15.9	15.9
Freq. (MHz)	220.5	217.5	220.5	217.5
Limit (dB)	13.4	13.5	13.4	13.5

N/A	MAIN	SR	MAIN	SR
Worst Pair	45-78	45-78	45-78	45-78
<b>ACR-N (dB)</b>	17.7	16.7	36.2	35.9
Freq. (MHz)	15.5	6.1	218.0	216.0
Limit (dB)	45.5	55.1	1.0	1.2
Worst Pair	78	45	78	45
<b>PS ACR-N (dB)</b>	18.6	17.6	36.8	37.8
Freq. (MHz)	14.6	6.6	217.0	216.0
Limit (dB)	43.6	51.8	-1.8	-1.7

PASS	MAIN	SR	MAIN	SR
Worst Pair	12	45	12	45
<b>RL (dB)</b>	1.6	1.7	2.3	2.7
Freq. (MHz)	89.3	42.3	193.5	128.5
Limit (dB)	12.5	15.7	9.1	10.9

Compliant Network Standards:  
 10BASE-T      100BASE-TX      100BASE-T4  
 1000BASE-T    2.5GBASE-T      5GBASE-T  
 ATM-25        ATM-51            ATM-155  
 100VG-AnyLan    TR-4              TR-16 Active  
 TR-16 Passive