



Cable ID: NCN-P1C6U-2CBK

Date / Time: 10/21/2024 10:27:40 AM

Headroom 22.9 dB (NEXT 36-45)

Test Limit: TIA Cat 6 Channel

Cable Type: Cat 6 U/UTP

NVP: 71.0%

Operator: WLQ

Software Version: V6.6 Build 2

Limits Version: V7.6

Calibration Date:

Main (Module): 06/30/2020

Remote (Module): 06/30/2020

Test Summary: PASS

Model: DSX-8000

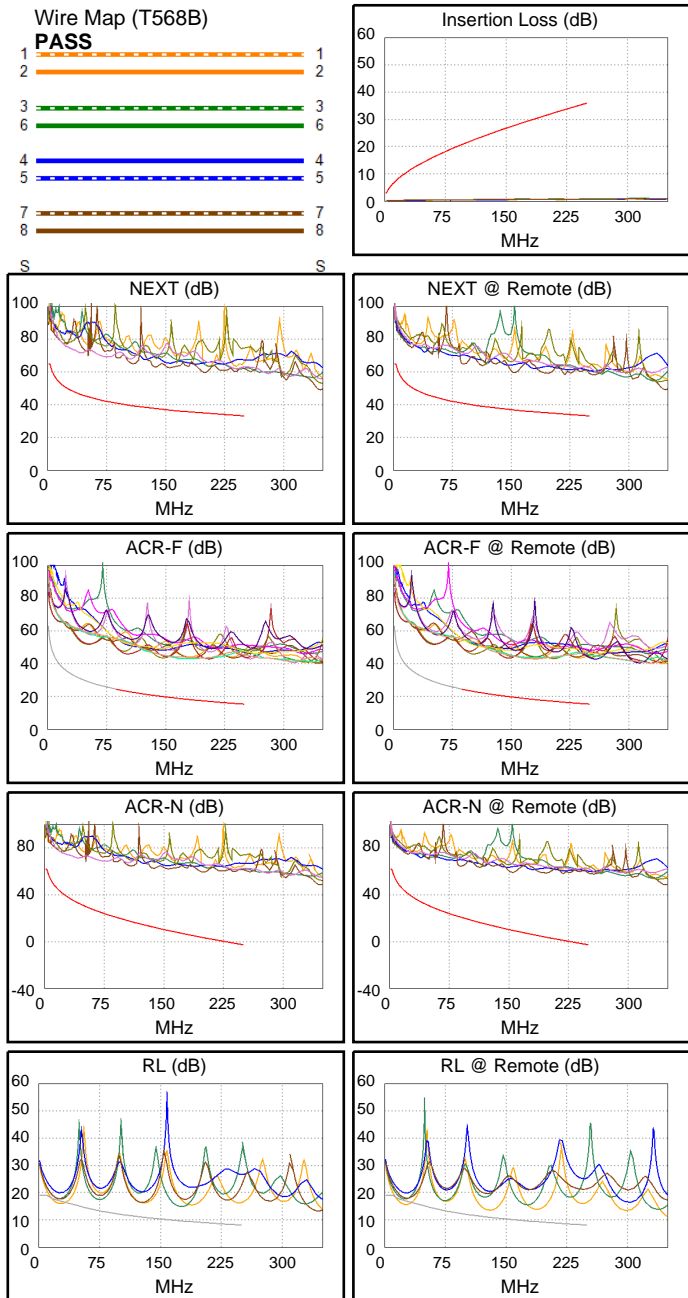
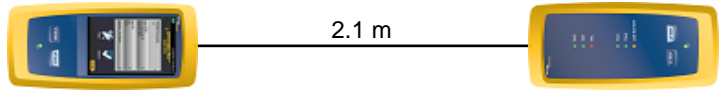
Main S/N: 1903179

Remote S/N: 1852211

Main Adapter: DSX-CHA804

Remote Adapter: DSX-CHA804

Length (m), Limit 100.0	[Pair 12]	2.1
Prop. Delay (ns), Limit 555	[Pair 36]	10
Delay Skew (ns), Limit 50	[Pair 12]	0
Resistance (ohms)	[Pair 12]	0.69
Insertion Loss Margin (dB)	[Pair 12]	35.2
Frequency (MHz)	[Pair 12]	250.0
Limit (dB)	[Pair 12]	35.9



Worst Case Margin Worst Case Value

PASS	MAIN	SR	MAIN	SR
Worst Pair	36-45	36-45	36-45	36-45
NEXT (dB)	23.7	22.9	25.0	24.1
Freq. (MHz)	6.4	153.5	200.5	221.0
Limit (dB)	59.8	36.8	34.8	34.0
Worst Pair	36	45	45	45
PS NEXT (dB)	23.6	22.8	26.1	25.8
Freq. (MHz)	5.3	5.0	240.0	250.0
Limit (dB)	58.6	59.0	30.5	30.2

PASS	MAIN	SR	MAIN	SR
Worst Pair	36-45	45-36	45-78	78-45
ACR-F (dB)	22.5	22.4	24.6	24.6
Freq. (MHz)	49.5	48.3	179.5	179.5
Limit (dB)	29.4	29.6	18.2	18.2
Worst Pair	36	36	45	36
PS ACR-F (dB)	22.0	21.5	24.1	27.6
Freq. (MHz)	1.4	1.0	150.5	249.0
Limit (dB)	57.5	60.3	16.7	12.3

N/A	MAIN	SR	MAIN	SR
Worst Pair	36-45	12-45	36-45	36-45
ACR-N (dB)	26.7	27.3	56.1	57.0
Freq. (MHz)	1.0	3.0	200.5	221.0
Limit (dB)	62.0	61.5	3.2	0.6
Worst Pair	36	12	45	45
PS ACR-N (dB)	28.1	27.1	60.7	61.2
Freq. (MHz)	5.3	3.6	240.0	250.0
Limit (dB)	54.0	57.4	-4.6	-5.8

N/A	MAIN	SR	MAIN	SR
Worst Pair	12	12	36	12
RL (dB)	-1.1	-1.5	5.3	2.7
Freq. (MHz)	25.6	24.5	176.5	132.5
Limit (dB)	17.0	17.1	9.5	10.8

Compliant Network Standards:
 10BASE-T 100BASE-TX 100BASE-T4
 1000BASE-T 2.5GBASE-T 5GBASE-T
 ATM-25 ATM-51 ATM-155
 100VG-AnyLan TR-4 TR-16 Active
 TR-16 Passive