



**Cable ID: NCN-P1C6U-2CBL**

Date / Time: 10/21/2024 10:20:06 AM

Headroom 21.4 dB (NEXT 36-45)

Test Limit: TIA Cat 6 Channel

Cable Type: Cat 6 U/UTP

NVP: 71.0%

Operator: WLQ

Software Version: V6.6 Build 2

Limits Version: V7.6

Calibration Date:

Main (Module): 06/30/2020

Remote (Module): 06/30/2020

**Test Summary: PASS**

Model: DSX-8000

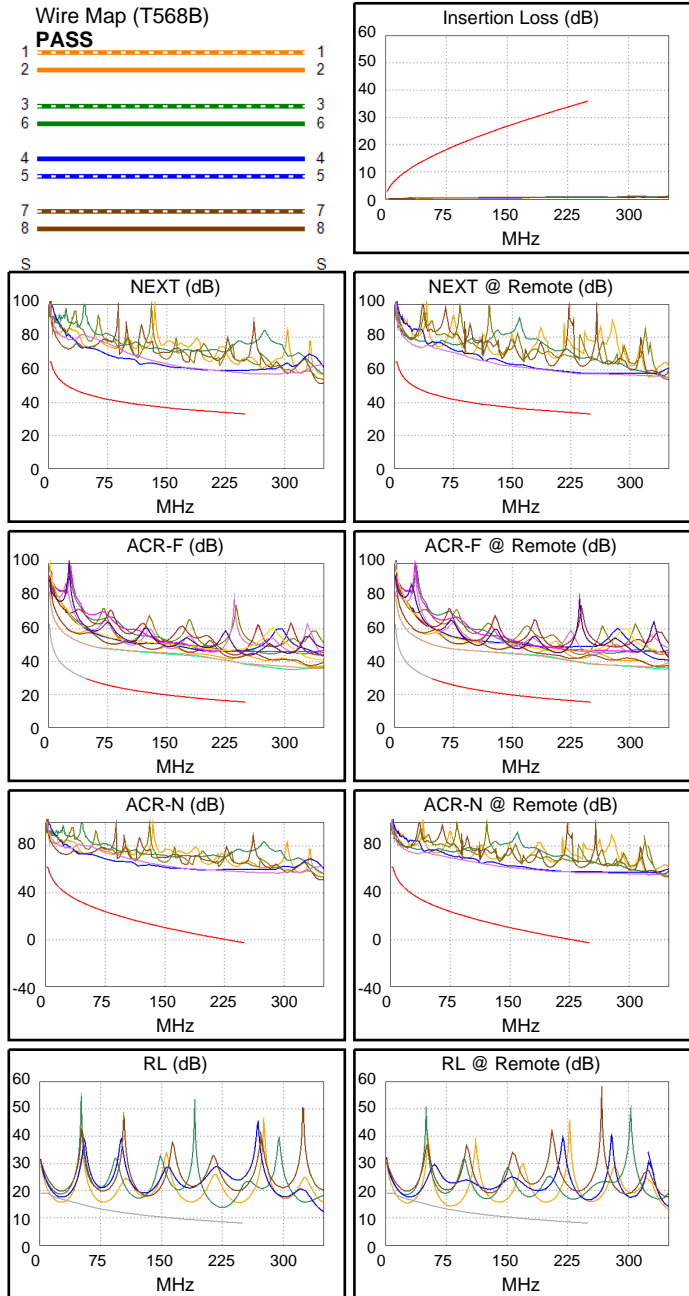
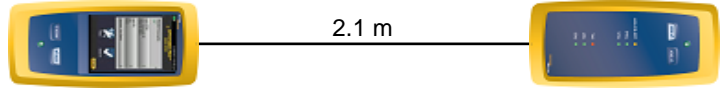
Main S/N: 1903179

Remote S/N: 1852211

Main Adapter: DSX-CHA804

Remote Adapter: DSX-CHA804

|                             |           |       |
|-----------------------------|-----------|-------|
| Length (m), Limit 100.0     | [Pair 12] | 2.1   |
| Prop. Delay (ns), Limit 555 | [Pair 36] | 10    |
| Delay Skew (ns), Limit 50   | [Pair 12] | 0     |
| Resistance (ohms)           | [Pair 12] | 0.66  |
|                             |           |       |
| Insertion Loss Margin (dB)  | [Pair 36] | 32.0  |
| Frequency (MHz)             | [Pair 36] | 215.0 |
| Limit (dB)                  | [Pair 36] | 32.9  |



**Worst Case Margin Worst Case Value**

| PASS                | MAIN  | SR    | MAIN  | SR    |
|---------------------|-------|-------|-------|-------|
| Worst Pair          | 36-45 | 45-78 | 45-78 | 12-78 |
| <b>NEXT (dB)</b>    | 21.4  | 23.9  | 24.7  | 24.2  |
| Freq. (MHz)         | 15.5  | 239.0 | 250.0 | 250.0 |
| Limit (dB)          | 53.5  | 33.5  | 33.1  | 33.1  |
| Worst Pair          | 36    | 45    | 78    | 78    |
| <b>PS NEXT (dB)</b> | 22.5  | 23.2  | 25.1  | 24.0  |
| Freq. (MHz)         | 7.8   | 7.9   | 250.0 | 250.0 |
| Limit (dB)          | 55.8  | 55.7  | 30.2  | 30.2  |

| PASS                 | MAIN  | SR    | MAIN  | SR    |
|----------------------|-------|-------|-------|-------|
| Worst Pair           | 45-78 | 45-78 | 45-78 | 78-45 |
| <b>ACR-F (dB)</b>    | 19.9  | 19.9  | 23.2  | 23.2  |
| Freq. (MHz)          | 6.4   | 5.6   | 250.0 | 250.0 |
| Limit (dB)           | 47.2  | 48.3  | 15.3  | 15.3  |
| Worst Pair           | 45    | 45    | 78    | 78    |
| <b>PS ACR-F (dB)</b> | 22.0  | 21.8  | 25.4  | 24.9  |
| Freq. (MHz)          | 1.0   | 1.0   | 250.0 | 250.0 |
| Limit (dB)           | 60.3  | 60.3  | 12.3  | 12.3  |

| N/A                  | MAIN  | SR    | MAIN  | SR    |
|----------------------|-------|-------|-------|-------|
| Worst Pair           | 36-45 | 12-45 | 45-78 | 12-78 |
| <b>ACR-N (dB)</b>    | 27.5  | 27.9  | 60.0  | 59.5  |
| Freq. (MHz)          | 7.8   | 3.1   | 250.0 | 250.0 |
| Limit (dB)           | 52.8  | 61.2  | -2.8  | -2.8  |
| Worst Pair           | 36    | 45    | 78    | 78    |
| <b>PS ACR-N (dB)</b> | 27.3  | 27.9  | 60.5  | 59.4  |
| Freq. (MHz)          | 5.3   | 5.1   | 250.0 | 250.0 |
| Limit (dB)           | 54.0  | 54.2  | -5.8  | -5.8  |

| N/A            | MAIN | SR   | MAIN  | SR   |
|----------------|------|------|-------|------|
| Worst Pair     | 12   | 12   | 36    | 12   |
| <b>RL (dB)</b> | -1.4 | -1.6 | 5.4   | 1.5  |
| Freq. (MHz)    | 24.5 | 25.6 | 227.5 | 82.8 |
| Limit (dB)     | 17.1 | 17.0 | 8.4   | 12.8 |

Compliant Network Standards:  
 10BASE-T      100BASE-TX      100BASE-T4  
 1000BASE-T    2.5GBASE-T      5GBASE-T  
 ATM-25      ATM-51      ATM-155  
 100VG-AnyLan    TR-4      TR-16 Active  
 TR-16 Passive