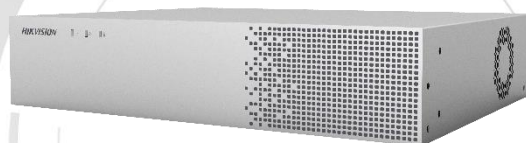


iDS-6704NXI-I/BA (C) DeepinMind Series NVS



- Up to 4-ch facial recognition for people not wearing hard hat
- Up to 4-ch work behavior analysis
- Up to 4-ch street behavior analysis
- Up to 4-ch people counting
- 2 × RJ-45 10/100/1000 Mbps self-adaptive Ethernet interface
- 4K (4096 × 2160) HDMI output
- Centralized management of network cameras, including configuration, information import/export, real-time information display, two-way audio, upgrade, etc.



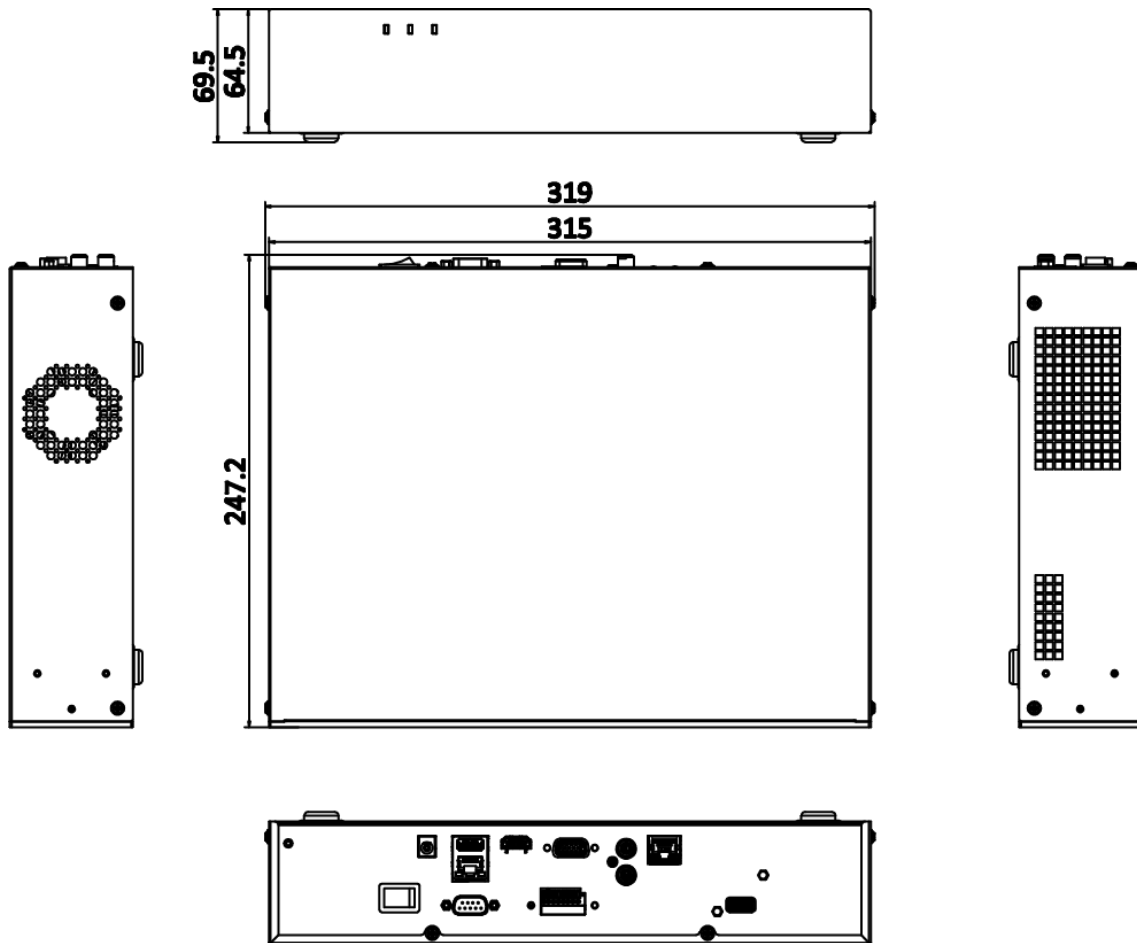
▪ Specification

| Model | | iDS-6704NXI-I/BA |
|---|--------------------------|---|
| Hard Hat Detection¹ | Face Picture Library | 16 libraries, 100, 000 pictures |
| | Face Picture Comparison | Up to 4-ch 4 MP face picture comparison alarm for people not wearing hard hat (HD network camera, up to 8 MP, H.264/H.265) |
| Work Behavior Analysis¹ | Work Behavior Analysis | Up to 4-ch 4 MP, including absence detection, staying overtime detection, number of people exception detection, and playing mobile phone detection (HD network camera, up to 8 MP, H.264/H.265) |
| Street Behavior Analysis¹ | Street Behavior Analysis | Up to 4-ch 4 MP, including people gathering detection, people running detection, physical conflict detection, and people falling down detection (HD network camera, up to 8 MP, H.264/H.265) |
| People Counting¹ | People Counting | Up to 4-ch 4 MP (HD network camera, up to 8 MP, H.264/H.265), including people counting statistics and regional people counting |
| Video and Audio | IP Video Input | 4-ch Up to 12 MP resolution *: 32 MP and 24 MP is only available for channel 1 when ultra HD resolution mode is enabled. |
| | Incoming Bandwidth | 320 Mbps |
| | Outgoing Bandwidth | 256 Mbps |
| | HDMI Output | 1-ch, 4K (3840 × 2160)/60Hz, 4K (3840 × 2160)/30Hz, 2K (2560 × 1440)/60Hz, 1920 × 1080/60Hz, 1600 × 1200/60Hz, 1280 × 1024/60Hz, 1280 × 720/60Hz, 1024 × 768/60Hz |
| | VGA Output | 1-ch, 1920 × 1080/60Hz, 1280 × 1024/60Hz, 1280 × 720/60Hz, 1024 × 768/60Hz |
| | Video Output Mode | HDMI/VGA independent output |
| | Audio Output | 1-ch, RCA (Linear, 1 KΩ) |
| | Two-Way Audio | 1-ch, RCA (2.0 Vp-p, 1 KΩ) |
| Decoding | Decoding Format | H.265+/H.265/H.264+/H.264/MPEG4 |
| | Recording Resolution | 32 MP/24 MP/12 MP/8 MP/6 MP/5 MP/4 MP/3 MP/1080p/UXGA/720p/VGA /4CIF/DCIF /2CIF/CIF/QCIF *: 32 MP and 24 MP is only available for channel 1 when ultra HD resolution mode is enabled. |
| | Synchronous playback | 4-ch |
| | Decoding Capability | 4-ch@8 MP (30 fps) |
| | Stream Type | Video, Video & Audio |
| | Dual-stream | Support |
| | Audio Compression | G.711ulaw/G.711alaw/G.722/G.726/MP2L2 |
| Network | Remote Connection | 128 |
| | Network Protocol | TCP/IP, DHCP, IPv4, IPv6, DNS, DDNS, NTP, RTSP, SADP, SMTP, SNMP, NFS, iSCSI, ISUP, UPnP™, HTTP, HTTPS |
| | Network Interface | 2, RJ-45 10/100/1000 Mbps self-adaptive Ethernet interface |
| Auxiliary Interface | Serial Interface | RS-232 |
| | SATA | 1 SATA interface |

| | | |
|----------------------|------------------------|---|
| | Capacity | 1 built-in 3.5-inch 2 TB SATA hard disk |
| | Alarm In/Out | 4/1 |
| | USB Interface | Rear panel: 1 × USB 3.0, 1 × USB 2.0 |
| General | Power Supply | 12 VDC, 3.33 A |
| | Consumption | ≤ 30 W |
| | Working Temperature | -10 °C to 55 °C (14 °F to 131 °F) |
| | Working Humidity | 10 to 90 % |
| | Dimension (W × D × H) | 319 × 247 × 70 mm (12.6"× 9.7" × 2.8") |
| | Weight | ≤ 3.9 kg (8.6 lb) |
| | Obtained Certification | CE, FCC, CB, WEEE, BIS |
| Certification | FCC | Part 15 Subpart B, ANSI C63.4 |
| | CE | EN 55032:2015, EN 61000-3-2, EN 61000-3-3, EN 50130-4 |

1: Hard hat detection, work behavior analysis, street behavior analysis, and people counting cannot be enabled at the same time. Enable one function will make the others unavailable.

▪ Dimension

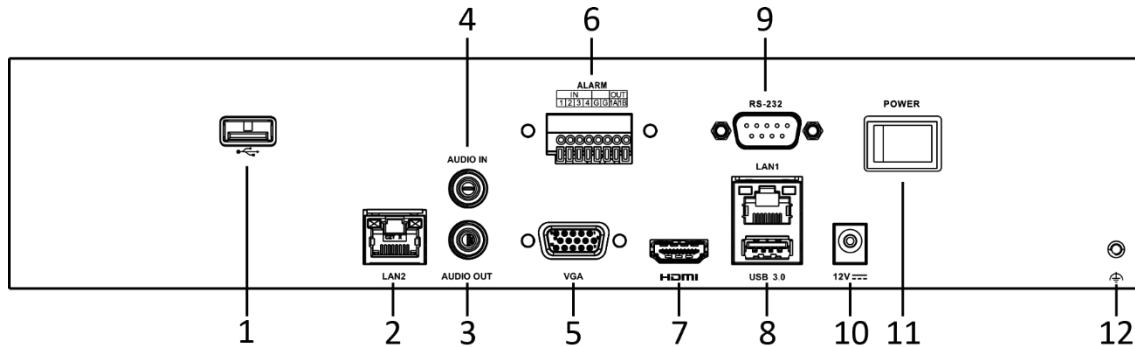


Unit: mm

Available Model

iDS-6704NXI-I/BA (C)

Physical Interface



| No. | Description | No. | Description |
|-----|--------------------|-----|-----------------------------|
| 1 | USB 2.0 Interface | 7 | HDMI Interface |
| 2 | LAN2 Interface | 8 | LAN1 and USB 3.0 Interfaces |
| 3 | AUDIO OUT | 9 | RS-232 Interface |
| 4 | AUDIO IN | 10 | Power Supply |
| 5 | VGA Interface | 11 | Power Switch |
| 6 | Alarm In/Alarm Out | 12 | GND |

Distributed by



HIKVISION®

Headquarters

No.555 Qianmo Road, Binjiang District,
Hangzhou 310051, China
T +86-571-8807-5998
overseasbusiness@hikvision.com

Hikvision USA
T +1-909-895-0400
sales.usa@hikvision.com

Hikvision Australia
T +61-2-8599-4233
salesau@hikvision.com

Hikvision India
T +91-22-28469900
sales@pramahikvision.com

Hikvision Canada
T +1-866-200-6690
sales.canada@hikvision.com

Hikvision Thailand
T +662-275-9949
sales.thailand@hikvision.com

Hikvision Europe
T +31-23-5542770
sales.eu@hikvision.com

Hikvision Italy
T +39-0438-6902
info.it@hikvision.com

Hikvision Brazil
T +55 11 3318-0050
Latam.support@hikvision.com

Hikvision Turkey
T +90 (216)521 7070- 7074
sales.tr@hikvision.com

Hikvision Malaysia
T +601-7652-2413
sales.my@hikvision.com

Hikvision UK & Ireland
T +01628-902140
sales.uk@hikvision.com

Hikvision South Africa
Tel: +27 (10) 0351172
sale.africa@hikvision.com

Hikvision France
T +33(0)1-85-330-450
info.fr@hikvision.com

Hikvision Kazakhstan
T +7-727-9730667
nikia.panfilov@hikvision.ru

Hikvision Vietnam
T +84-974270888
sales.vt@hikvision.com

Hikvision UAE
T +971-4-4432090
salesme@hikvision.com

Hikvision Singapore
T +65-6684-4718
sg@hikvision.com

Hikvision Spain
T +34-91-737-16-55
info.es@hikvision.com

Hikvision Tashkent
T +99-87-1238-9438
uzb@hikvision.ru

Hikvision Hong Kong
T +852-2151-1761
info.hk@hikvision.com

Hikvision Russia
T +7-495-669-67-99
saleru@hikvision.com

Hikvision Korea
T +82-(0)31-731-8817
sales.korea@hikvision.com

Hikvision Poland
T +48-22-460-01-50
info.pl@hikvision.com

Hikvision Indonesia
T +62-21-2933759
Sales.Indonesia@hikvision.com

Hikvision Colombia
sales.colombia@hikvision.com
04407002010419