

MV-CU020-19GM/GC

2 MP 1/2.8" CMOS GigE Area Scan Camera



GEN<i>i>CAM

GIG<i>E</i>
VISION

Introduction

MV-CU020-19GM/GC camera adopts Sony® IMX290 sensor to provide high-quality images. It uses GigE interface to transmit non-compressed images in real time, and its max. frame rate can reach 56 fps in full resolution.

Key Feature

- Adopts low consumption platform with stable performance.
- Supports wide dynamic range, noise reduction and sharpness functions.
- Customized filter with strong anti-interference ability is optional.
- Supports hardware trigger, software trigger, free run, etc.
- Adopts GigE interface and max. transmission distance of 100 meters without relay.
- Compatible with GigE Vision V2.0 Protocol, GenICam Standard, and third-party software based on the protocol and standard.

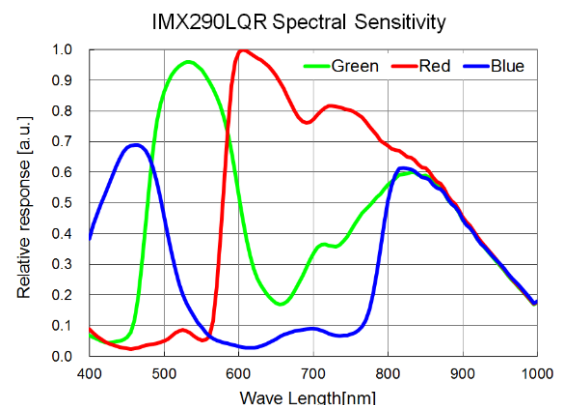
Available Model

- Mono camera: MV-CU020-19GM
- Color camera: MV-CU020-19GC
- Mono camera: MV-CU020-19GC (850nm Bandpass)

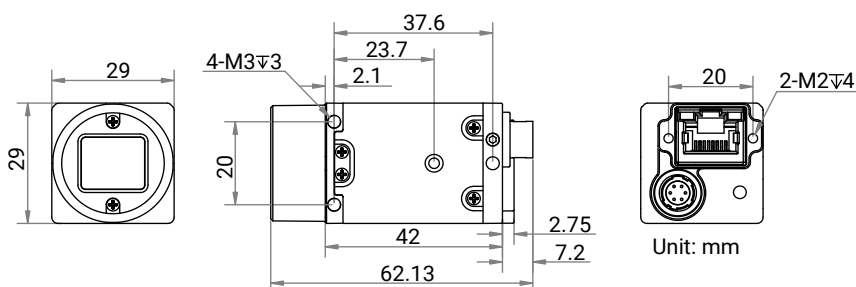
Applicable Industry

Mold protector, microscopy imaging, food and medicine package, etc.

Sensor Quantum Efficiency



Dimension



Specification

Model	MV-CU020-19GM	MV-CU020-19GC	MV-CU020-19GC(850nm Bandpass)
Performance			
Sensor type	CMOS, rolling shutter		
Sensor model	Sony® IMX290		
Pixel size	2.9 μm × 2.9 μm		
Sensor size	1/2.8"		
Resolution	1920 × 1080		
Max. frame rate	56 fps @1920 × 1080 Mono 8		
Dynamic range	90 dB		
SNR	41 dB		
Gain	0 dB to 24 dB	0 dB to 30 dB	0 dB to 24 dB
Exposure time	64 μs to 130 ms	128 μs to 260 ms	64 μs to 130 ms
Exposure mode	Off/Once/Continuous exposure mode		
Mono/color	Mono	Color	Mono
Pixel format	Mono 8	Mono 8, YUV422Packed	Mono 8
Binning	Supports 1 × 1, 2 × 2	Not supported	Supports 1 × 1, 2 × 2
Decimation	Not supported		
Reverse image	Supports horizontal and vertical reverse image output		
Electrical feature			
Data interface	Gigabit Ethernet, compatible with Fast Ethernet		
Digital I/O	6-pin P7 connector provides power and I/O, including opto-isolated input × 1 (Line 0), opto-isolated output × 1 (Line 1), bi-directional non-isolated I/O × 1 (Line 2).		
Power supply	9 VDC to 24 VDC, supports PoE		
Power consumption	Typ. 2.1 W@12 VDC		
Mechanical			
Lens mount	C-mount		
Dimension	29 mm × 29 mm × 42 mm (1.1" × 1.1" × 1.7")		
Weight	Approx. 100 g (0.2 lb.)		
Ingress protection	IP30 (under proper lens installation and wiring)		
Temperature	Working temperature: 0 °C to 50 °C (32 °F to 122 °F) Storage temperature: -30 °C to 70 °C (-22 °F to 158 °F)		
Humidity	20% to 80% RH, non-condensing		
General			
Client software	MVS or third-party software meeting with GigE Vision Protocol		
Operating system	32/64-bit Windows XP/7/10, 32/64-bit Linux and 64-bit MacOS		
Compatibility	GigE Vision V2.0, GenICam		
Certification	CE, RoHS, KC		