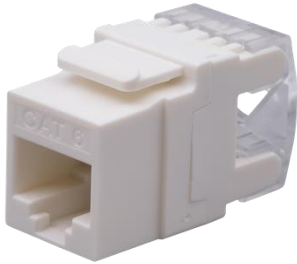


180° Cat 6 UTP Keystone Jack, Dual IDC



Model: NPN-KEY-1C6U-180C

Main Features:

- ✧ Dual IDC: Krone & 110 compatible;
- ✧ Durable design: ≥ 750 mating, ≥ 250 termination;
- ✧ 3U Gold-plated contacts for enhanced conductivity;
- ✧ Dual color-coded for easy T568A/B wiring scheme.

Connector Type

Category	Cat 6
Shielding	Unshielded
Connector	RJ45 Jack
IDC Type	Dual (Krone & 110)
Angle	180°

Material

Housing Material	PBT
IDC Material	PC Contact Jaw: Phosphor Bronze with Tin Plating, thickness = 0.5 mm
Contact Material	Phosphor Bronze with Nickel Plating, thickness = 0.3 mm
Contact Surface Material	Gold Plating, thickness = 3U (3 μ m or 0.0762 μ m)
PCB Material	FR-4, thickness = 1.6 mm

Electrical Properties

Voltage/Current Rating	125 VAC RMS / 1.5 A
Insulation Resistance	≥ 1000 M Ω at 500 VDC
Contact Resistance	≤ 100 m Ω
Dielectric Strength	750 VAC RMS, 60 Hz, 1 minute

Mechanical Properties

RJ45 Jack	≥ 750 mating cycles
IDC Lifespan	≥ 250 termination cycles
Wire Gauge	AWG 22-26
Wiring Scheme	T568A/T568B

Environment

Operating Temperature	-25°C to 70°C
Operating Humidity	RH 10% to 90% (non-condensing)
Storage Temperature	-40°C to 85°C
Storage Humidity	RH 5% to 96% (non-condensing)

General

Dimension	16.1 x 20 x 29 mm (WxHxD)
Net Weight	6.9 g (dust cap included)

Diagram

unit: mm

