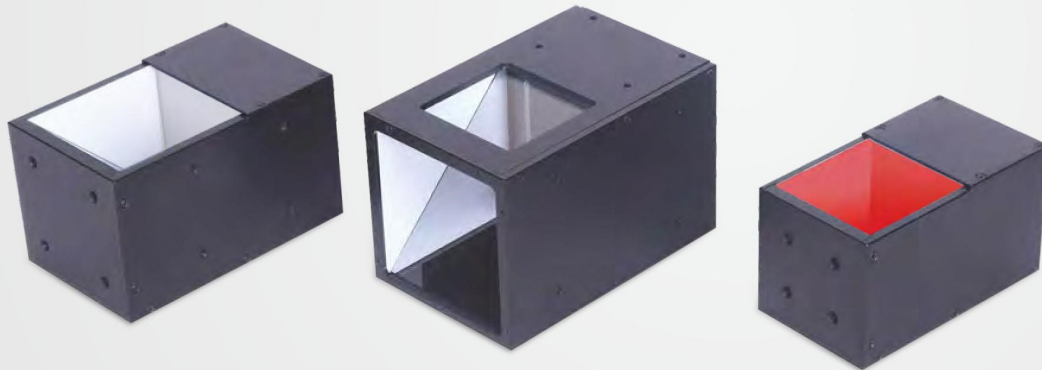


Coaxial Lights OPT-CO/OPT-COR Series



Product Features

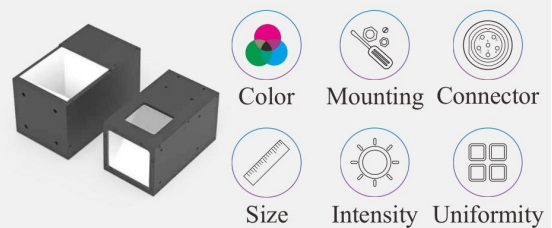
Main Features

- Excellent directional emitting light suitable for long working distance, enhancing the image features
- The high density LED arrays and special heat dissipation design ensure the illumination intensity and long lifespan.
- For surface detection of reflective workpieces, it able to highlight the unevenness of surface

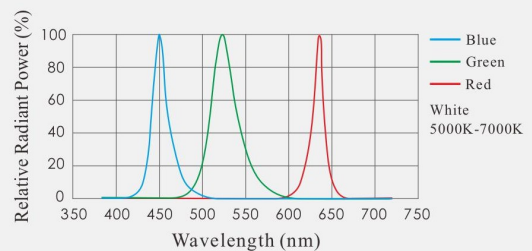
Application Cases

- Scratches detection on highly reflective surfaces
- Defect detection on silicon wafers
- Mark positioning
- Barcode reading
- Laser-marked OCR codes reading
- Edge positioning and gauging of workpiece
- LCD glue inspection
- Bump points on object surface defects detection

Customizable Items



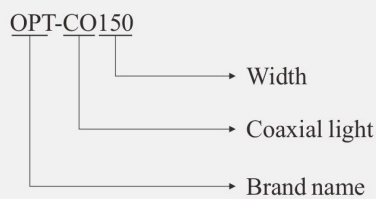
Spectrum Chart



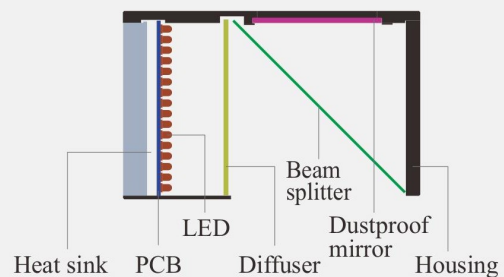
Note: The data is for reference only.

OPT-CO Coaxial Lights

Selection Guide

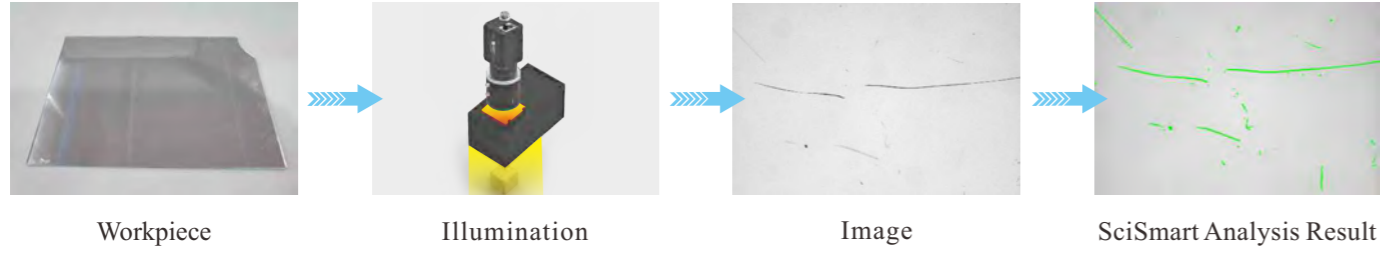


Section Structure Drawing



Application Cases

■ Detection of defects on reflective glass surface



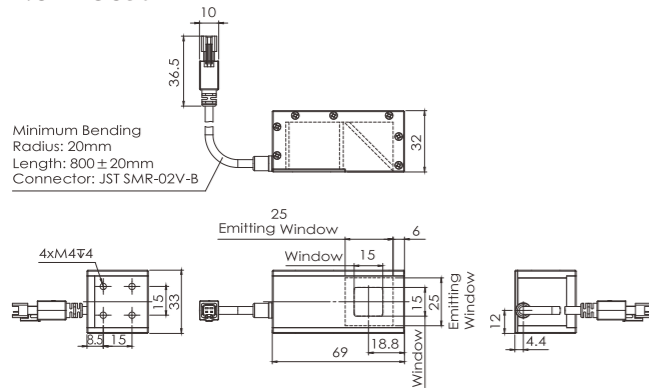
Model Table

No.	Model	* Input ●	* Input ○●●	Recommended controller
1	OPT-CO30	1.4W@24V	1.8W@24V	OPT-DPA2024E
2	OPT-CO40	2.2W@24V	3.3W@24V	
3	OPT-CO50	4W@24V	5.9W@24V	
4	OPT-CO60	5.3W@24V	8.0W@24V	
5	OPT-CO70	8.9W@24V	10.5W@24V	
6	OPT-CO80	8W@24V	12W@24V	
7	OPT-CO100	16.8W@24V	17.5W@24V	
8	OPT-CO150	31W@24V	36W@24V	
9	OPT-CO200	52.8W@2.2A	60W@2.5A	OPT-DPA6024

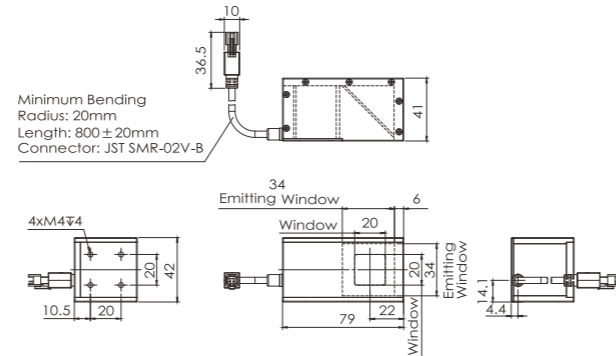
* Note: The data is for reference only.

Dimensions (mm)

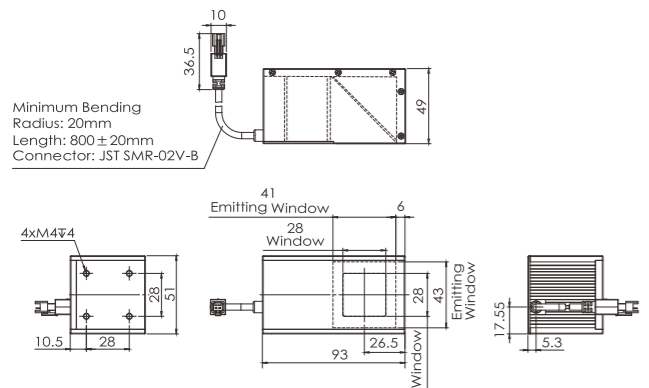
1.OPT-CO30



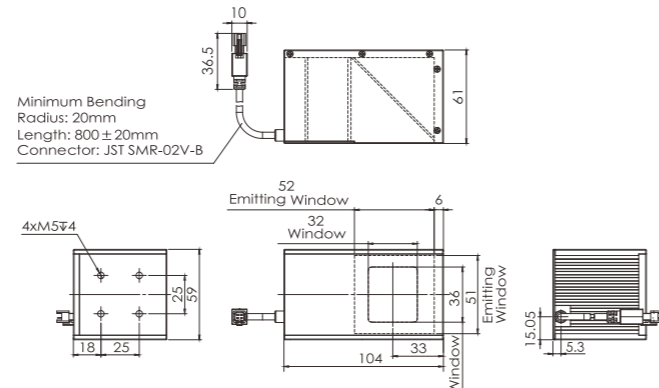
2.OPT-CO40



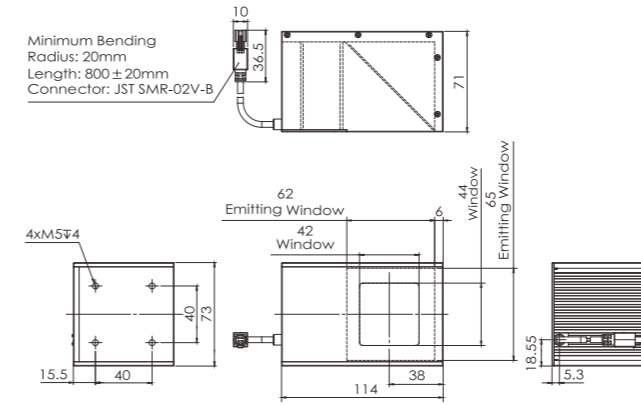
3.OPT-CO50



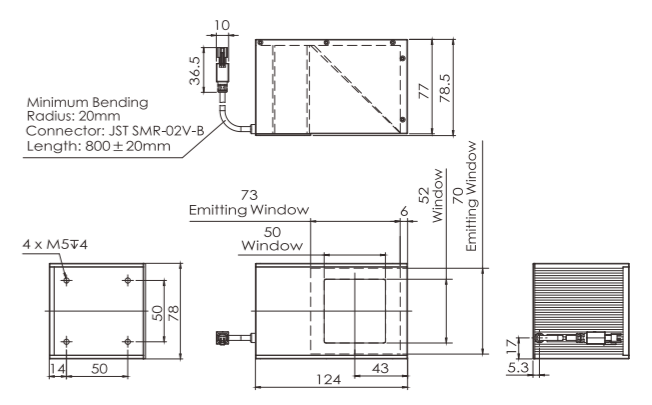
4.OPT-CO60



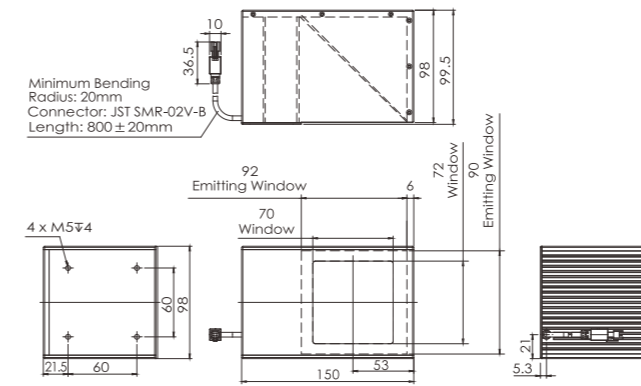
5.OPT-CO70



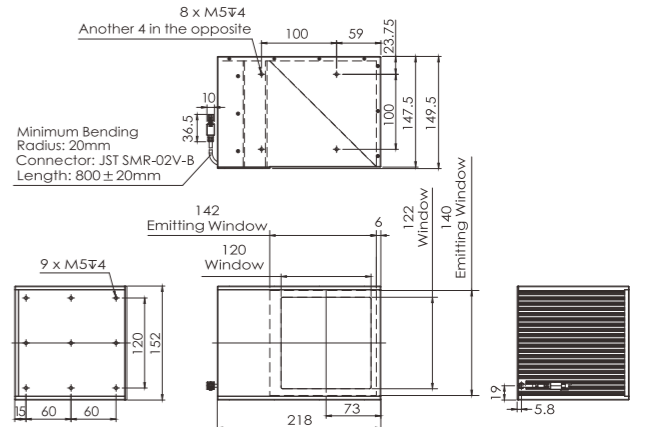
6.OPT-CO80



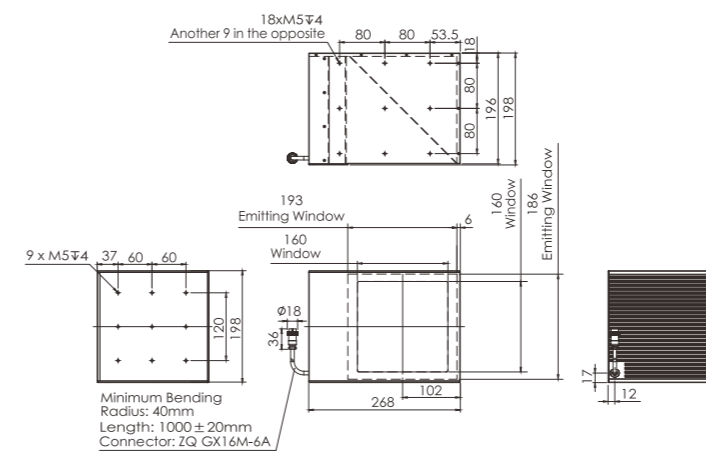
7.OPT-CO100



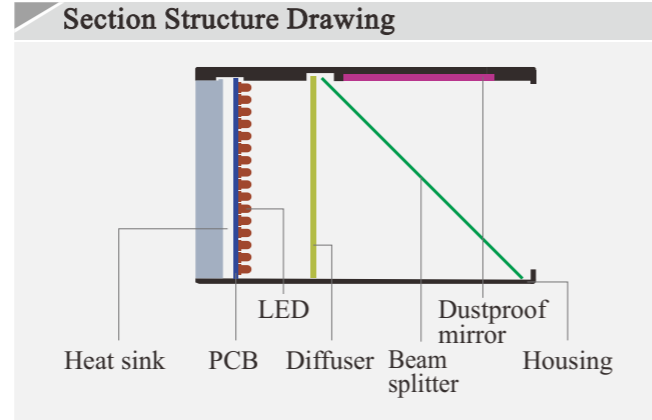
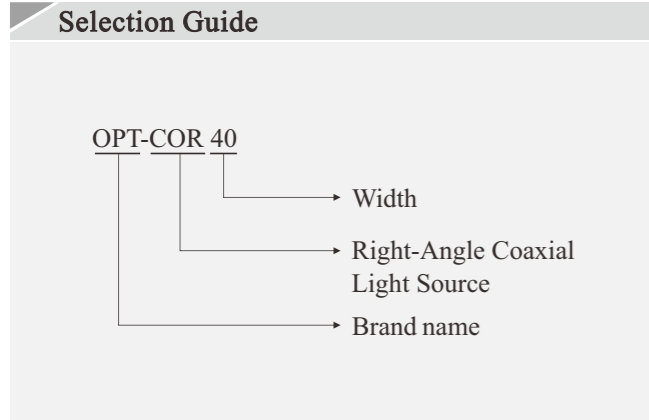
8.OPT-CO150



9.OPT-CO200

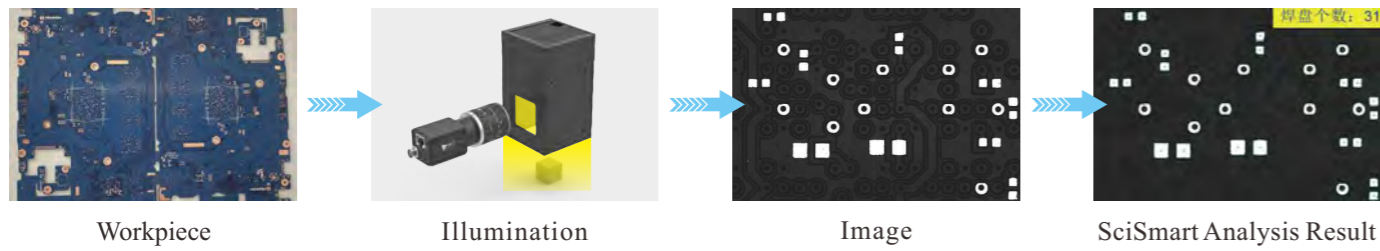


OPT-COR Right-Angle Coaxial Light Source



Application Cases

Application: positioning of PCB solder pads



Model Table

No.	Model	* Input ○	* Input ●	* Input ●	* Input ●	Recommended controller
1	OPT-COR40	3.3W@24V	2.2W@24V	3.6W@24V	3.4W@24V	OPT-DPA2024E
2	OPT-COR50	5.9W@24V	4W@24V	5.1W@24V	6W@24V	
3	OPT-COR60	7.5W@24V	5.3W@24V	8.1W@24V	8.1W@24V	
4	OPT-COR70	9.9W@24V	8.9W@24V	9.5W@24V	10.1W@24V	
5	OPT-COR80	11.6W@24V	10.5W@24V	10.9W@24V	11.7W@24V	

* Note: The data is for reference only.

Dimensions (mm)

