

PERFECTA 16 LTE

Alarm control panel

The **PERFECTA** family control panels are designed to protect small and medium-sized premises, such as apartments, detached houses, segments of terraced houses, offices, small businesses, etc. They provide protection to the requirements of EN 50131 Grade 2.

The control panel is simple to configure as well as easy and intuitive to operate using keypads, including touchscreen models. Functionalities of the alarm system can also be controlled remotely using the **PERFECTA CONTROL** mobile application and remote control keyfobs.

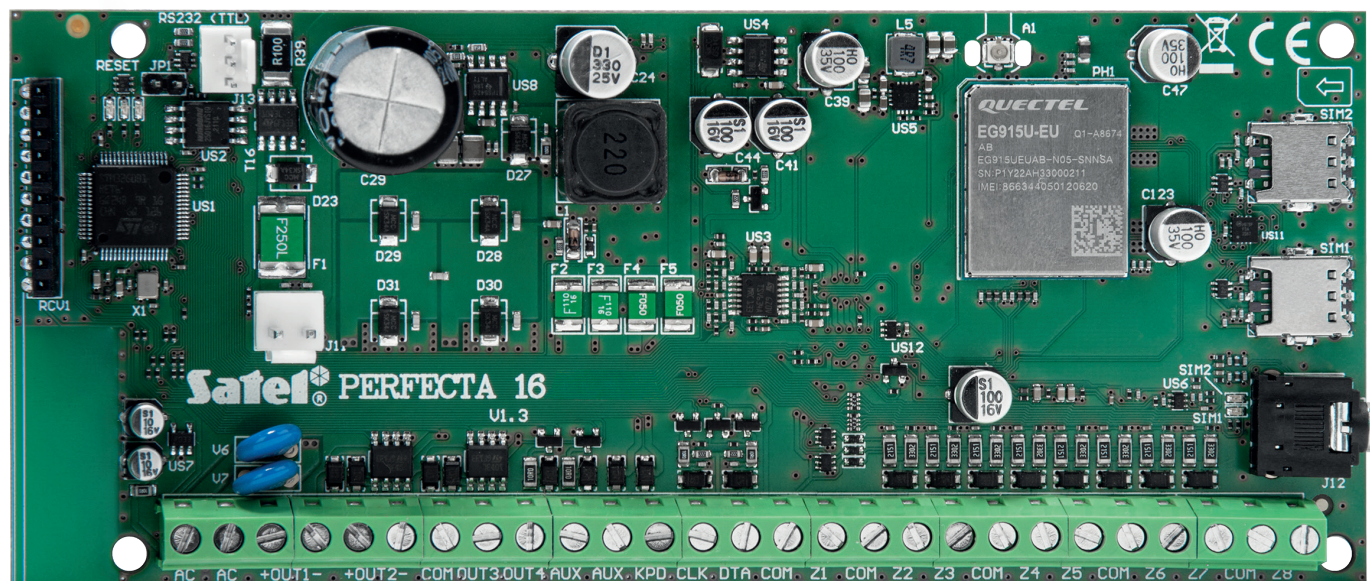
The PERFECTA 16 LTE control panel makes it possible to create wired and wireless systems – you can connect to it the **PERFECTA-RF**, i.e. the MICRA wireless system module (frequency band of 433 MHz). Alternatively, the **INT-RX-S** keyfob receiver expansion module may be connected to the control panel.

The PERFECTA 16 LTE control panel is equipped with a LTE communication module supporting 2G and 4G networks. This feature enables the use of a mobile application with push notifications support, remote configuration of the system using the **PERFECTA Soft** program, event reporting (e.g. to a security agency monitoring station), voice telephone messaging, SMS control and audio alarm verification (listening for sounds from the protected premises). The module supports two nano-SIM cards to ensure uninterrupted communication: if transmission over the first operator's network fails, the second card is automatically selected..

The control panel electronics board is provided with wired 8 zones and 4 outputs. Their number can be increased by connecting the extension modules: **INT-E** zone expander and **INT-O** or **INT-ORS** output expanders. This allows you to expand the system by adding more detectors, sirens, and even actuators (to control the garage door, roller shutters, garden sprinklers).

The control panel enables the object (premises) to be divided into two partitions, with three armed modes to select from (day, night, full). Each zone can be assigned to one or both of the supervised areas.

The system can be configured in two ways: from a computer with the PERFECTA Soft program installed (locally – connection via RS-232 (TTL) port, remotely – using data transmission over a cellular network*), as well as from a keypad.



- compliance with **EN 50131 Grade 2**
- from 8 to 16 programmable wired zones:
 - » selectable configuration: NO, NC, EOL, 2EOL/NO, 2EOL/NC
 - » support for roller shutter detectors / vibration detectors
- from 4 to 12 programmable wired outputs
- 4 additional outputs for operating **MICRA** wireless sirens (**MSP-300**)
- 2 power outputs on mainboard
- built-in modules:
 - » cellular communicator 2G/4G with two nano-SIM slots (SMS, reporting to monitoring station, mobile application, push notifications)
 - » voice (playback of voice messages for telephone messaging purposes)
 - » audio alarm verification (listening in)
- system division into 2 partitions:
 - » 3 detection modes in each partition
 - » optional assignment of each zone to two partitions
 - » user control or timer control option
- communication bus for connecting keypads (**PRF-LCD**), expansion modules (**INT-E**, **INT-O**, **INT-ORS**) and 433 MHz keyfob receiver expansion module (**INT-RX-S****)
- dedicated communication connector for the **PERFECTA-RF**** – the MICRA wireless system module
- system control by using:
 - » PRF-LCD keypads (up to 4)
 - » PERFECTA CONTROL mobile application
 - » remote control keyfobs
- support for the **PRF-LCD-WRL** wireless keypads within the MICRA system
- firmware updates available
- passwords:
 - » 15 user codes
 - » 1 service code
- editable names (of users, partitions, zones, outputs and modules) for easy control and supervision of the system
- timers:
 - » 8 timers with exceptions setting capability
- memory of 3584 events
- automatic diagnostics of main components of the system
- built-in switching power supply:
 - » overload protection
 - » battery deep discharge protection
 - » battery charging current control
- programming control panel settings:
 - » locally – keypad, computer with PERFECTA Soft program installed, connected to the control panel RS 232 (TTL) port
 - » remotely – a computer with the PERFECTA Soft program installed, connecting to the control panel using data transmission over a cellular network*

**support for data transmission using the LTE/EDGE/GPRS technology – depending on the cellular network capabilities*

***NOTE: only one device can be connected – either the **PERFECTA-RF** module or the **INT-RX-S** expander.*