



**QuadroSense™** is a special fence protection system. The main part of the system is the control unit, to which vibration sensitive **TB cables** are connected. The TB cable is a special triboelectric cable, which should be attached with cable tie to the fence to be protected, ideally in a saw-toothed or straight line pattern.

One end of the cable is connected to the control unit, and the other end is terminated by a resistor. The vibration caused by an intruder's motion generates friction in the cable elements, thereby inducing capacity. Depending on adjustable settings, this capacity change can generate an alarm.

The maximum length of the vibration sensitive cable is 250 m. Use of this cable is recommended only on a fence which can transmit vibration to the cable. It is also recommended where an intruder can cause cable vibration directly. For example, it is recommended under the ground to prevent digging, or on top of a concrete wall, where an intruder can cause direct cable vibration while attempting to climb over it.

The starting point of the vibration detection cable can be extended up to 500 m away using **DC cable**.

The vibration detection cable is passive and does not require an additional power supply. The operating parameters can be individually configured by the connected remote PC software.

The control unit has four alarm relay outputs to transmit an alarm signal, and sends system status information via a RS485 output. The housing of the control unit offers IP65 protection.

### MAIN FEATURES

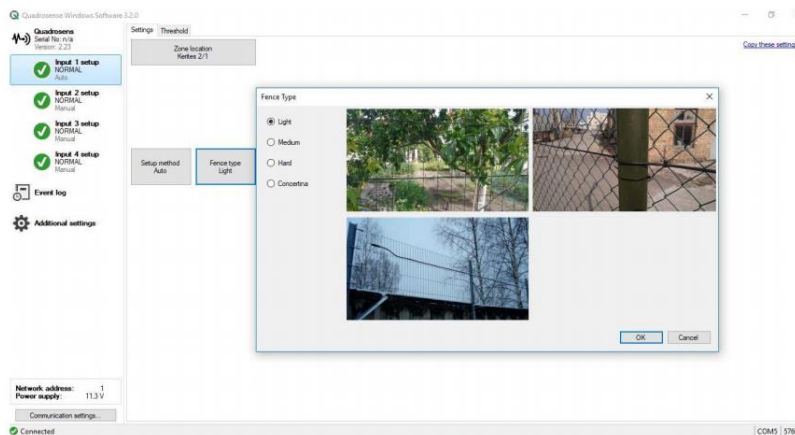
- 4 INPUT CHANNEL
- 250 M SENSOR CABLE/CHANNEL
- SOFTWARE-CONTROLLED SETUP
- PLUG AND PLAY INSTALLATION
- 256 DIFFERENT NETWORK ADDRESSES
- 4 NC ALARM OUTPUT
- 1 NC TAMPER OUTPUT
- OPERATION IN ALL WEATHER CONDITIONS



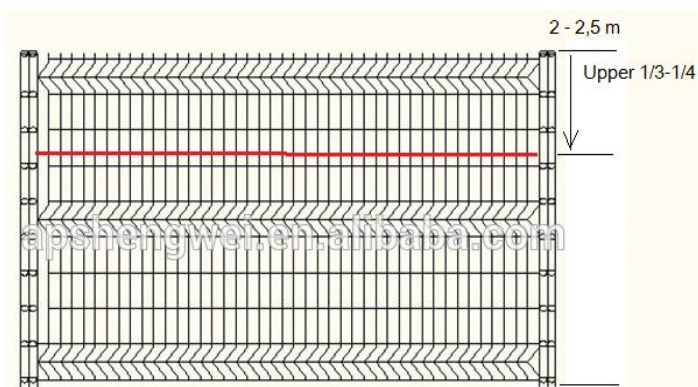
### SOFTWARE-CONTROLLED SETUP

The **Quadrosense control panel** is a free PC software to perform settings and adjustment of the control unit's features.

The software has a simple, user-friendly graphical surfacy, which makes the setup very easy and fast.



### TYPICAL INSTALLATION MODES OF THE TB CABLE

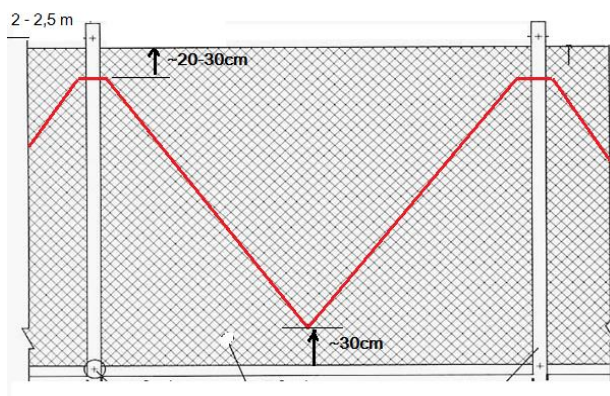


#### STRAIGHT LINE

This installation mode is suggested on more stable fence types like welded or rail fences, but also applicable to NATO concertina wires.

#### Fence types:

- Welded fence
- Rail fence
- NATO concertina wire



#### SAW-TOOTHED

This installation mode is suggested on lighter fences like net fence or wire fence. Important note, this installation method requires 1,6x more sensor cable.

#### Fence types:

- Chain link fence
- Net fence
- Barbed wire fence

## ACCESSORIES

### ■ TB CABLE

TB cable is the other main part of the Quadrosense fence protection system. This sensor cable is a special Triboelectric cable, which detects the vibrations of fence caused by intruder. Unit: 250m

### ■ DC CABLE

DC cable is a special signal transmitter cable. It is capable to extend the starting point of the sensor cable with up to 500 m. Unit: 500m

### ■ T-TUBE

Junction tube. Applicable to connect TB and DC cables or TB cables and End line units. IP68

### ■ USB / RS485

USB/RS485 converter is used for programming Quadrosense processing unit with Quadrosense control panel software or to connect devices to Perimote servers. There is a normal and a waterproofed version.

### ■ CT

Plastic, outdoor, UV-protected cable tie for fixing the TB or DC cables to the fence. Unit: 100pcs



## TECHNICAL FEATURES

<b>Sensor cable length/channel</b>	<b>250 m</b>
<b>Input channels</b>	<b>4</b>
<b>Power supply</b>	<b>9-30 VDC</b>
<b>Current consumption</b>	<b>180 mA</b>
<b>Network addresses</b>	<b>256</b>
<b>Communication</b>	<b>via RS-485</b>
<b>Software languages</b>	<b>English, Russian, Czech, Hungarian</b>
<b>Outputs</b>	<b>4 NC alarm, 1 NC tamper output</b>
<b>Operating temperature</b>	<b>-40 – +65 C°</b>
<b>Protection</b>	<b>IP 65</b>