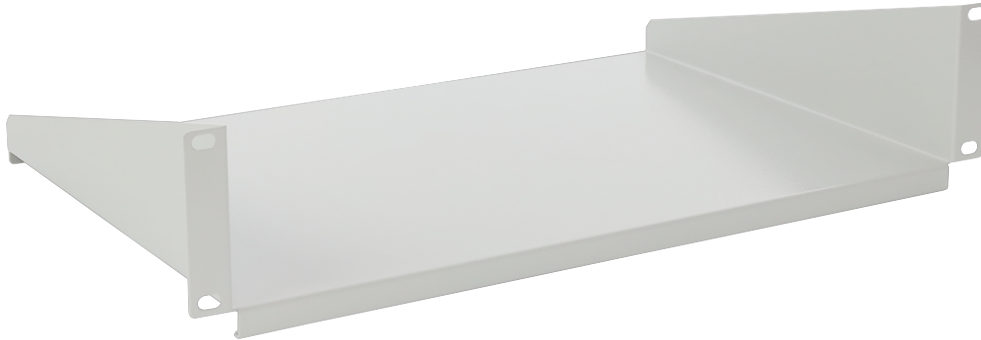


Code: **RAPD2-G** v.1.0 / I
Name: **Universal shelf 2U, 440×300, for 19" RACK cabinets, grey**

EN



DESTINATION

Front mount shelf is intended for a 450÷1000mm deep RACK cabinet. Due to shelf, RACK cabinet can accommodate devices that are not housed in a RACK 19" enclosure.

TECHNICAL DATA

Mounting dimensions:	19" x 2U x 300 mm front mounting, 4 M6 screws + cage nuts included
Dimensions:	484 x 103 x 300 [mm, +/-2]
Shelf:	440 x 300 [mm, +/-2]
Material:	cold-rolled steel SPCC, 1.2mm, RAL7035 (grey), metallic
Static load:	20 [kg]
Warranty:	2 years

