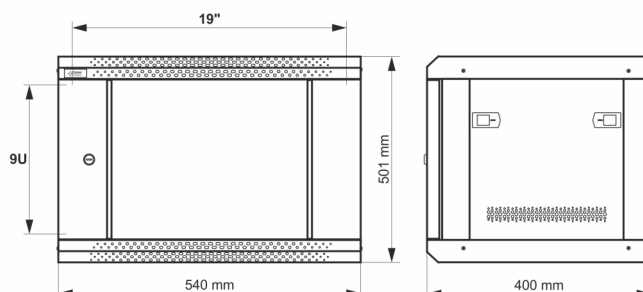
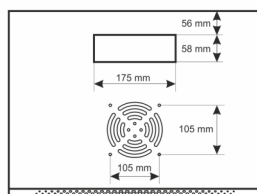
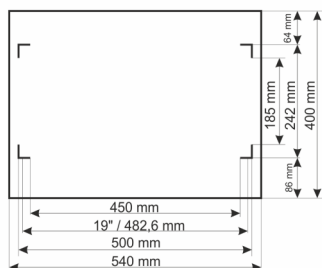
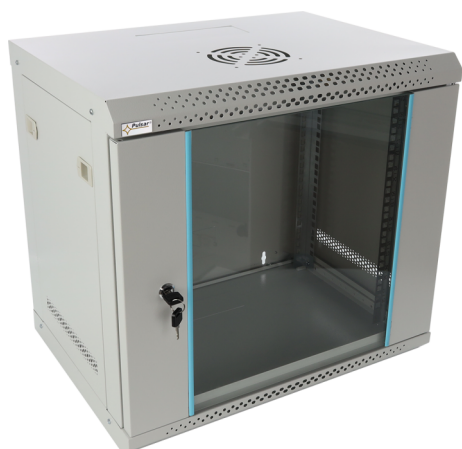


Code: **RW954-G v.1.0 / I**
Name: **9U / 19" RACK cabinet, wall mounted, fully assembled, grey, 540x400**

EN



DESTINATION

RACK 19" cabinet enables integrating CCTV, AC, I&HAS, RTV, LAN, or other systems in small companies or households. It is intended for devices manufactured in enclosures of 19" standard. Due to RACK cabinets, devices are aesthetically mounted and protected against mechanical damage.

TECHNICAL DATA

Mounting dimensions:	19" x 9U
Dimensions:	540 x 501 x 400 [mm, +/-2]
Material:	cold-rolled steel SPCC, 0.6mm, 1mm, RAL7035 (grey), metallic RACK mounting rails - 1,0mm front door - 0,6mm / 4mm toughened glass
Static load:	30 [kg]
Closing:	front door - lock (RAZ-G1, same code) side panel - Click
Destination:	indoor
Protection grade EN60529:	IP 20
Weight:	9.1 / 10.3 [kg]
Type Cabinets:	wall mounted fully assembled
Notes:	adjustable distance between front and rear RACK rails ventilation hole in the top panel (1 x 105x105mm - installation dimensions) cable ducts in the top and bottom panel (175x58mm) changeable door - right or left
Warranty:	2 years
Declaration:	CE