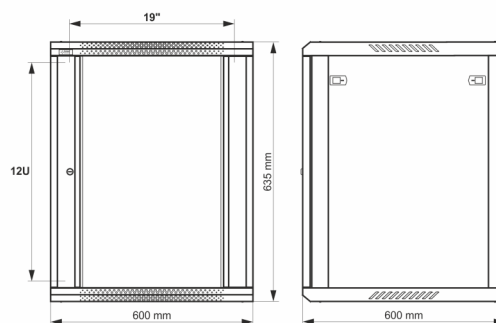
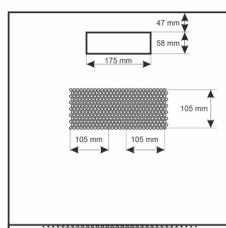
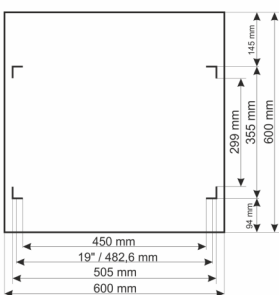
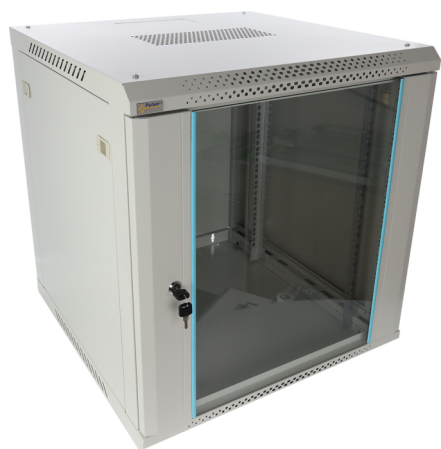


Code: **RWA1266-G** v.1.0 / I
Name: **12U / 19" RACK cabinet, wall mounted, ready to assemble, grey, 600x600**



RACK cabinets
assembly

DESTINATION

RACK 19" cabinet enables integrating CCTV, AC, I&HAS, RTV, LAN, or other systems in small companies or households. It is intended for devices manufactured in enclosures of 19" standard. Due to RACK cabinets, devices are aesthetically mounted and protected against mechanical damage.

TECHNICAL DATA

Mounting dimensions:	19" x 12U
Dimensions:	600 x 635 x 600 [mm, +/-2]
Material:	cold-rolled steel SPCC, 0.6mm, 0.8mm, 1mm, RAL7035 (grey), metallic RACK mounting rails - 1,0mm frame - 0,8mm top and bottom panel - 0,6mm front door - 0,6mm / 4mm toughened glass side panels - 0,6mm rear panel - 0,6mm
Static load:	50 [kg]
Closing:	front door - lock (RAZ-G2, same code) side panel - Click
Destination:	indoor
Protection grade EN60529:	IP 20
Weight:	16.6 / 18.6 [kg]
Type Cabinets:	wall mounted ready-to-assemble
Notes:	adjustable distance between front and rear RACK rails ventilation holes in the top panel (2 x 105x105mm - mounting dimensions) cable ducts in the top and bottom panel (175x58mm) changeable door - right or left Casters can be mounted
Warranty:	2 years
Declaration:	CE

